

Wilcox, S. L., & Ward, S. J. (2009, November). *Examination of trends in AP foreign language testing data*. Symposium presented at the ACTFL 2009 Annual Convention and World Languages Expo, San Diego, CA.

## **Examination of Trends in AP Foreign Language Testing Data**

Sheila L. Wilcox  
SWA Consulting Inc.

Stephen J. Ward  
SWA Consulting Inc.



**NOVEMBER 2009**

APPROVED FOR PUBLIC RELEASE;  
DISTRIBUTION UNLIMITED

# Copyright Notice

This document and its content is copyright ©1997-2010 of SWA Consulting Inc. All rights reserved.

Any redistribution or reproduction of part, or the entire document in any form is prohibited except for: (1) you may print or download to a local hard disk extracts for your personal and non-commercial use only, and (2) you may copy the content to individual third parties for their personal use, but only if you acknowledge the website and author(s) as the source of the material. You may not, except with our express written permission, distribute or commercially exploit the content, nor may you transmit it or store it on any other website or other form of electronic retrieval system.

# Trends in AP Foreign Language Testing

Sheila Wilcox  
Stephen Ward  
SWA Consulting Inc.

Prepared by:  
**SWA Consulting Inc.**

© SWA Consulting Inc. 2009  
swilcox@swa-consulting.com

- Study and data background
- No Child Left Behind (NCLB) Impact
- Test taker trends and scoring patterns
- Demographic trends:
  - Gender
  - Ethnicity
  - Grade Level
  - School Type

- Allowed to take exam without course participation
- Components
  - Multiple choice (Computer scored)
  - Free response/essay (Trained reader scored)

- Scoring
  - Numeric scale from 1 to 5
    - Weighted composite of multiple choice and free response/essay portions
- Most colleges accept a 4 or 5 as replacement for introductory college courses

## Foreign Language Courses

- French Literature
- French Language
- German Language
- Spanish Literature
- Spanish Language
- Latin Literature
- Latin: Vergil

## Other Subject Areas

- Biology
- Chemistry
- Calculus AB
- Calculus BC
- English Language
- English Literature

- 3 additional foreign language courses added in recent years:
  - Italian Language
  - Chinese Language and Culture
  - Japanese Language and Culture

# NCLB Impact

# NCLB Impact

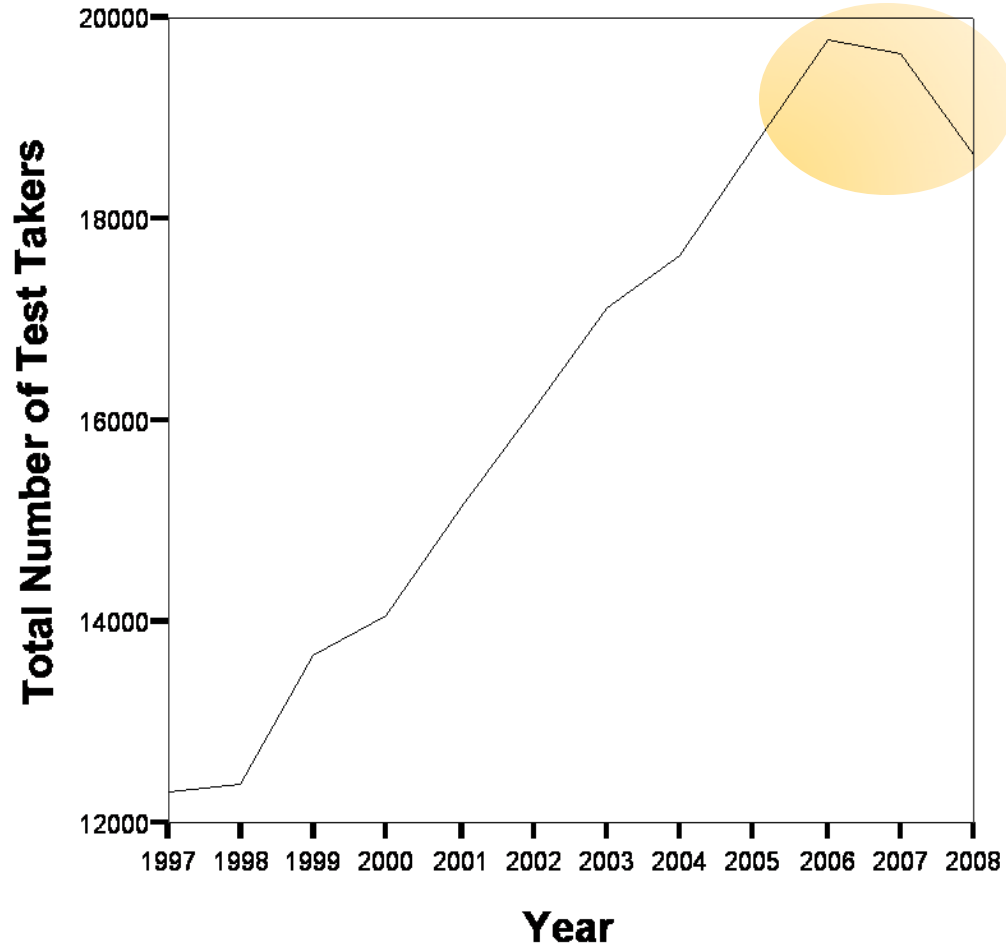
Course	Pre-NCLB Growth Rate	Post-NCLB Growth Rate
French Language	6.98%	2.39%
French Literature	2.89%	0.93%
German Language	4.54%	6.65%
Latin Literature	9.12%	6.10%
Latin Vergil	4.88%	5.39%
Spanish Language	13.58%	4.09%
Spanish Literature	13.99%	8.63%

# NCLB Impact

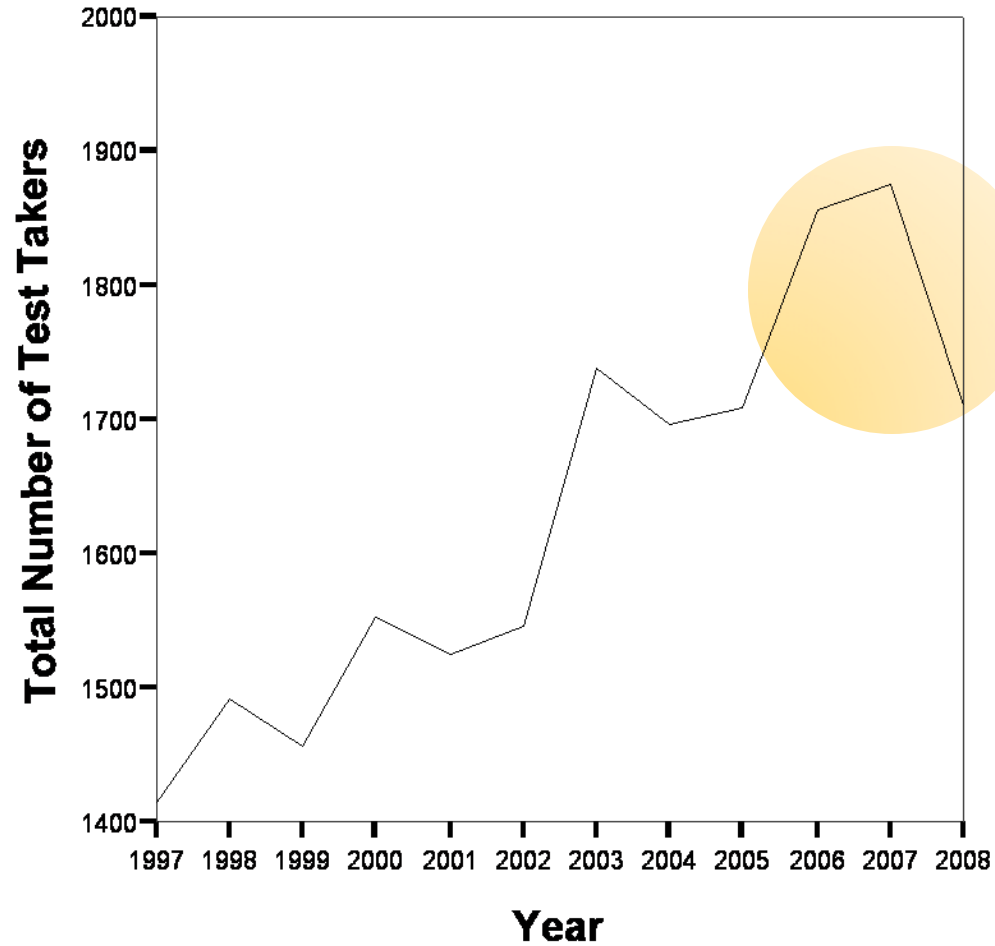
Course	Pre-NCLB Growth Rate	Post-NCLB Growth Rate
Biology	7.71%	10.07%
Chemistry	9.54%	11.14%
Calculus AB	8.70%	6.70%
Calculus BC	16.57%	9.63%
English Language	29.60%	15.17%
English Literature	7.75%	8.25%

- However

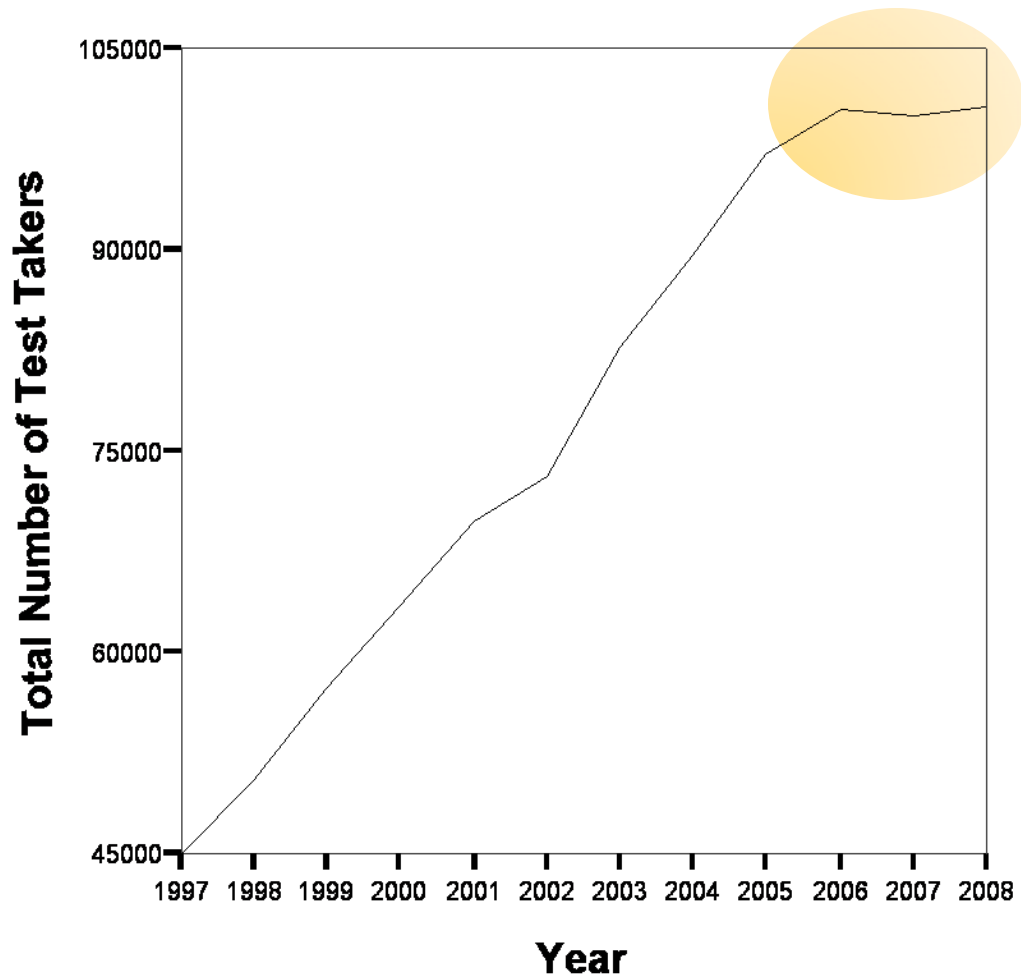
## French Language Test Takers



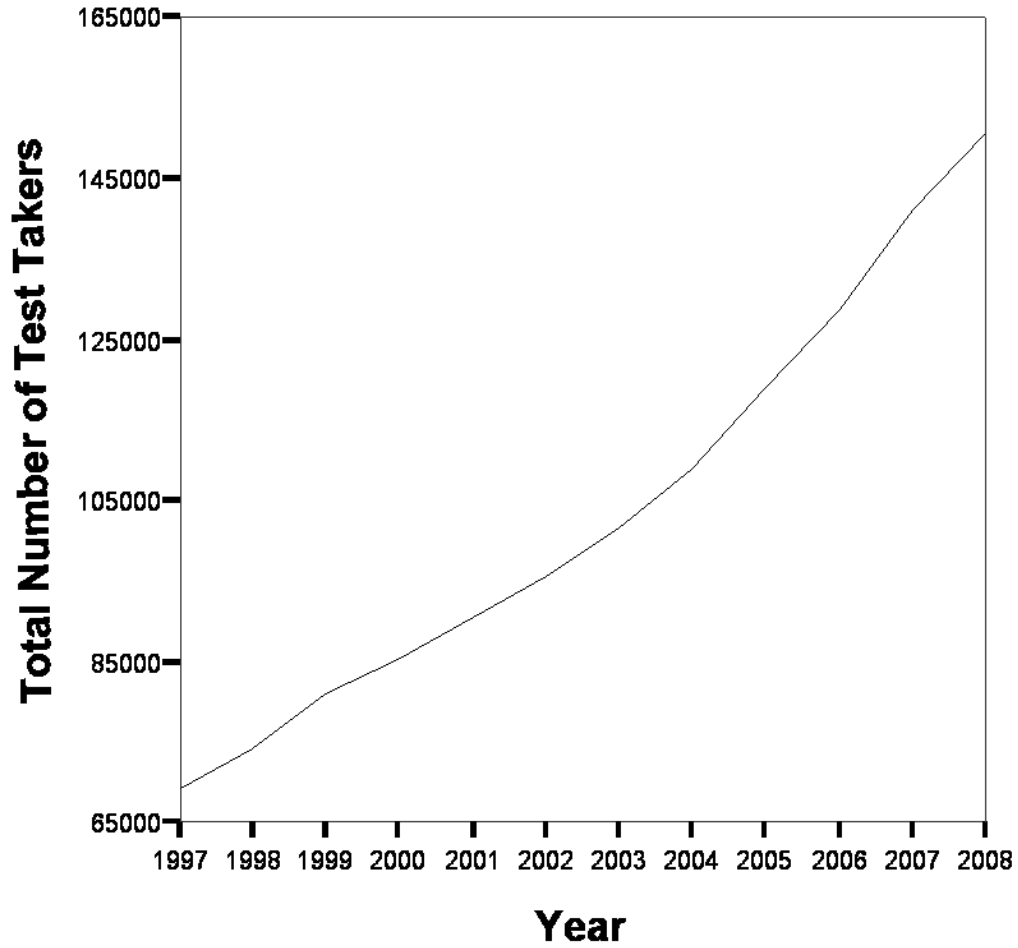
## French Literature Test Takers



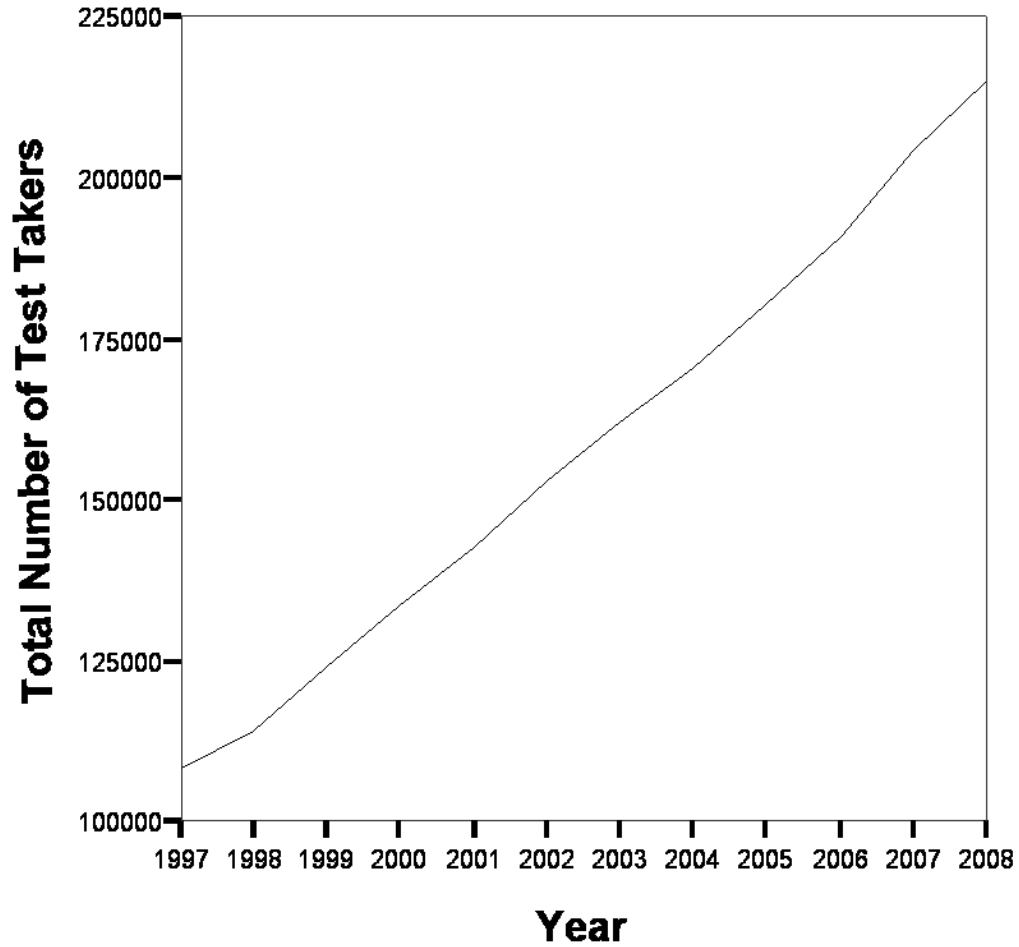
## Spanish Language Test Takers



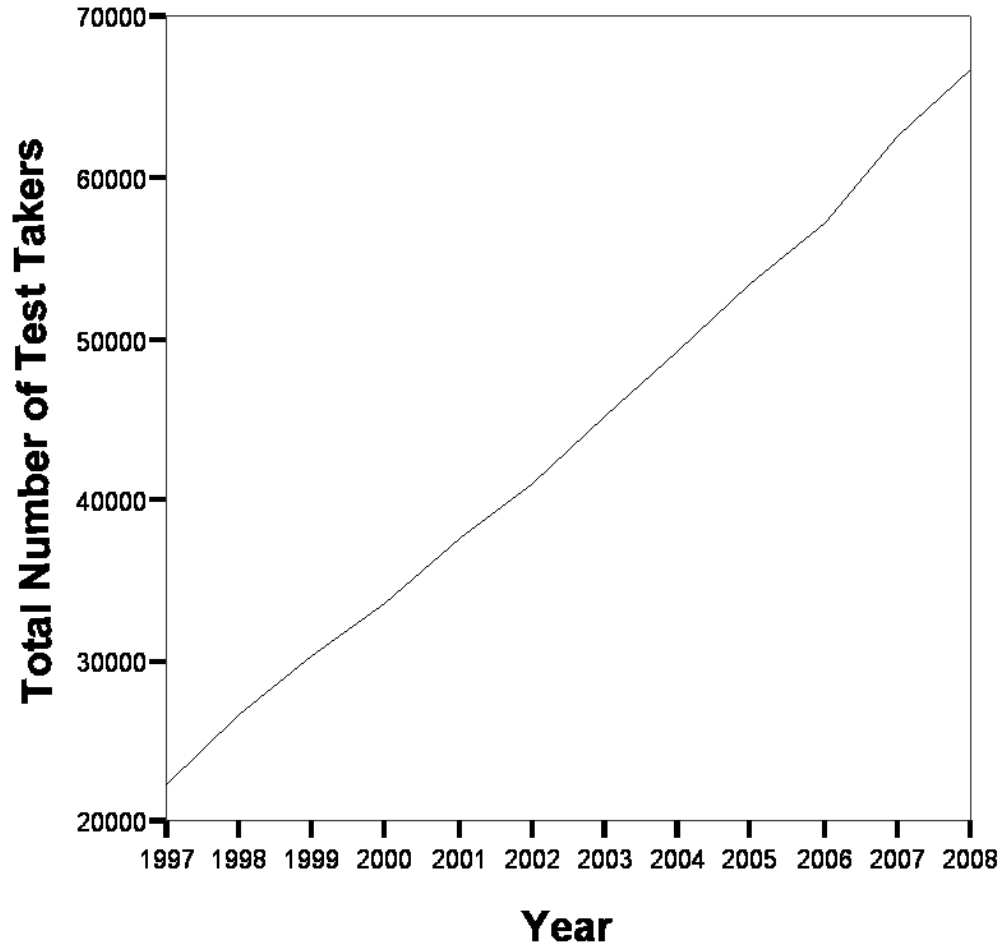
## Biology Total Test Takers



## Calculus AB Total Test Takers

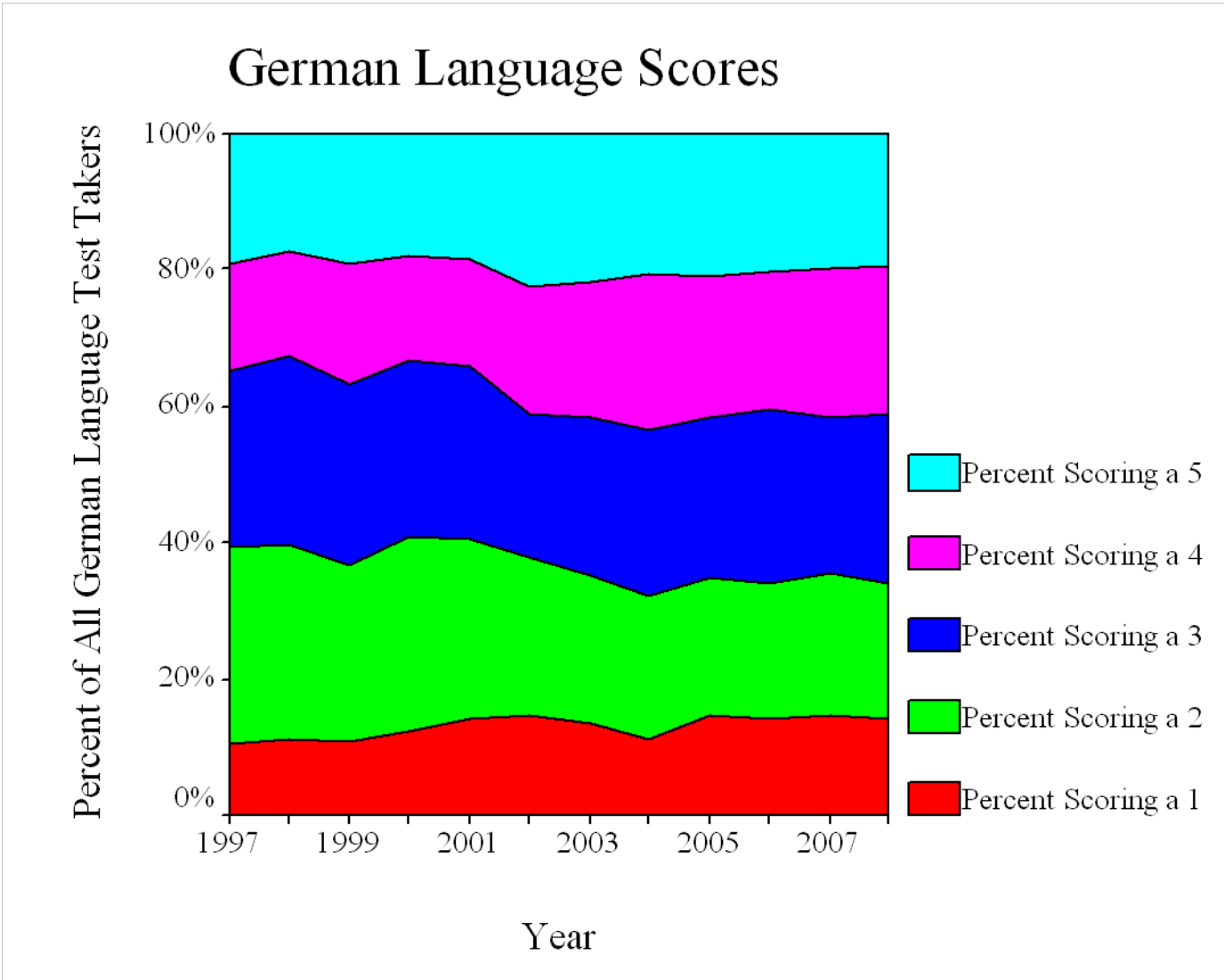


## Calculus BC Total Test Takers

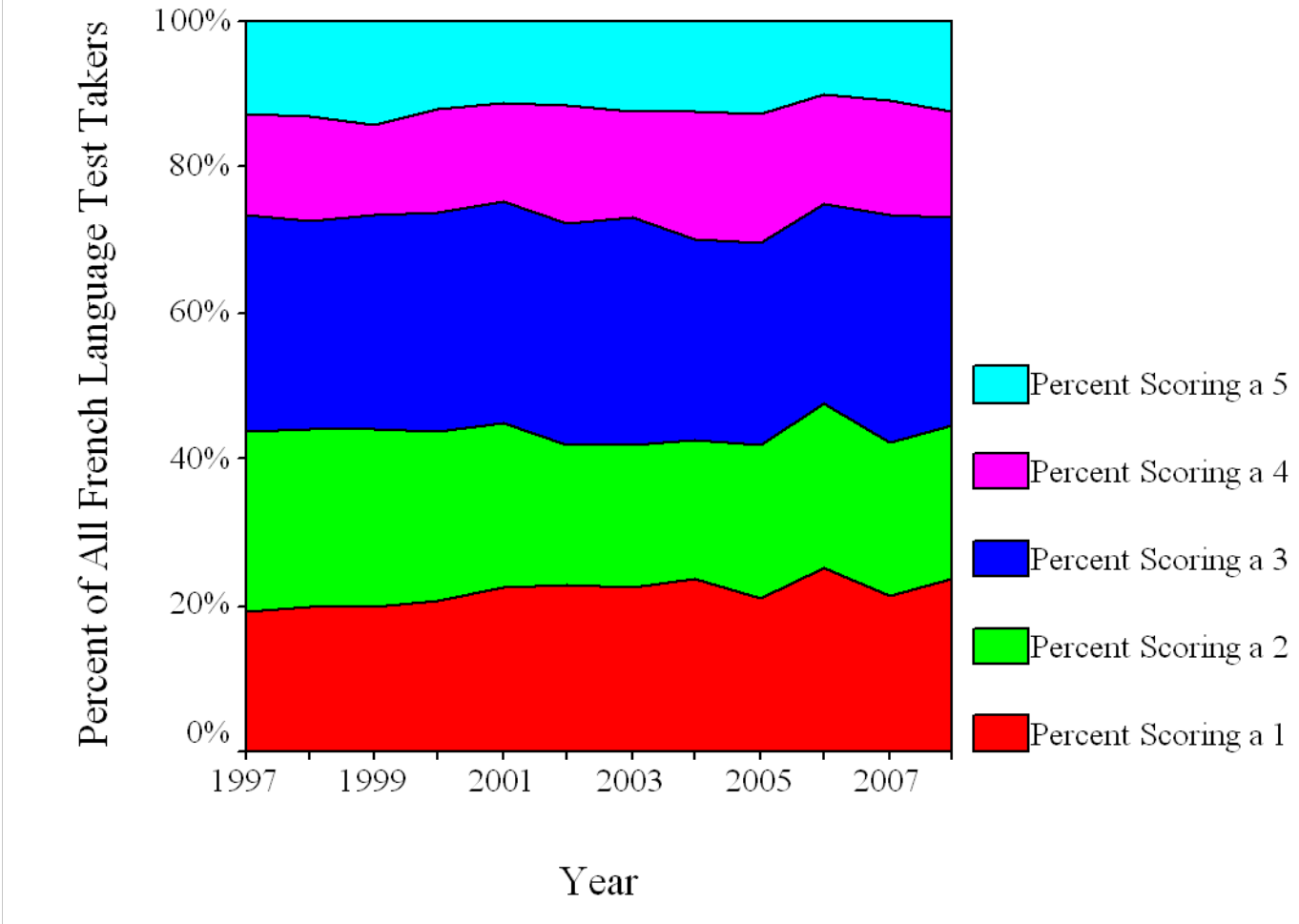


# Score Trends

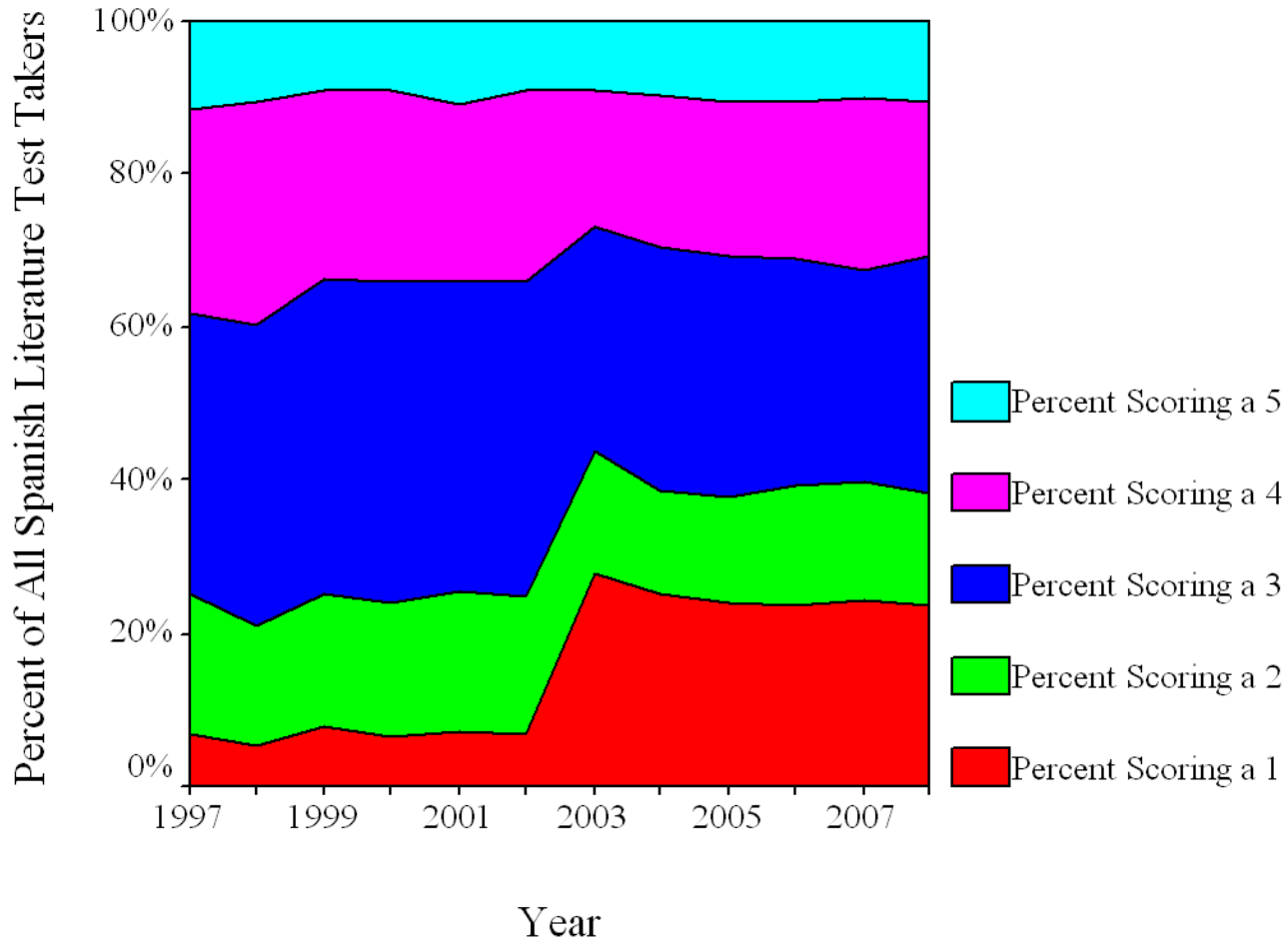
## German Language Scores



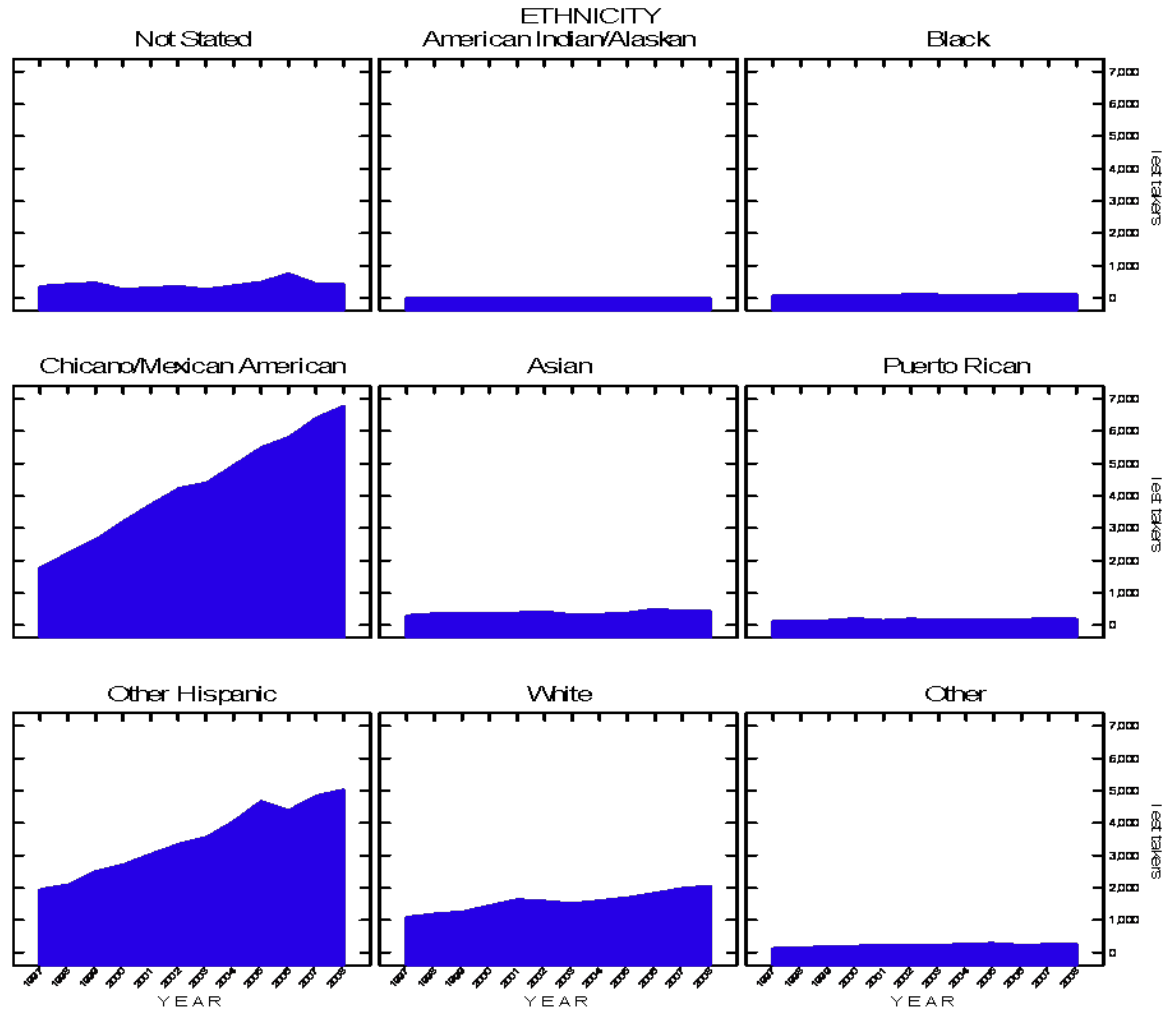
## French Language Scores



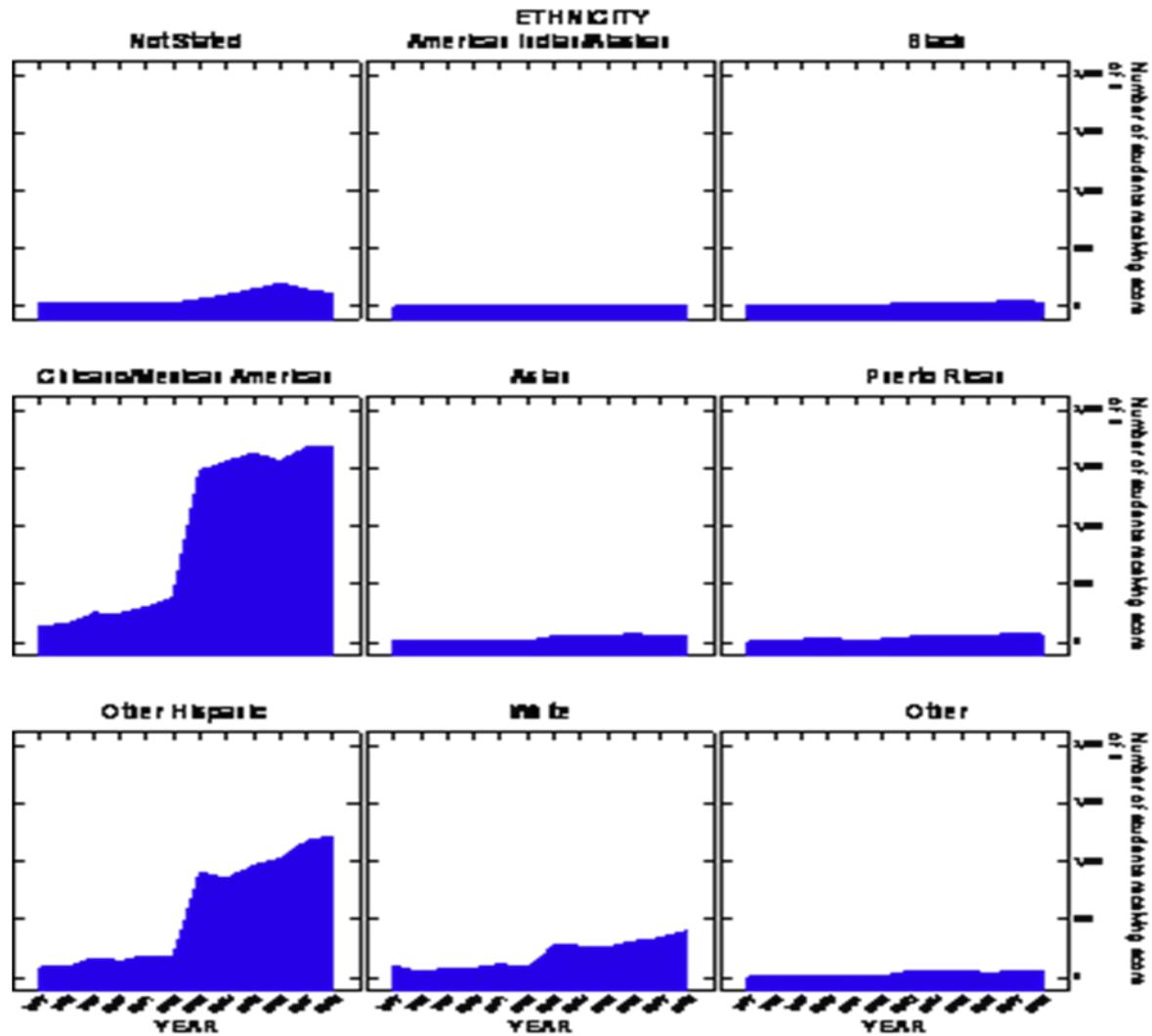
## Spanish Literature Scores



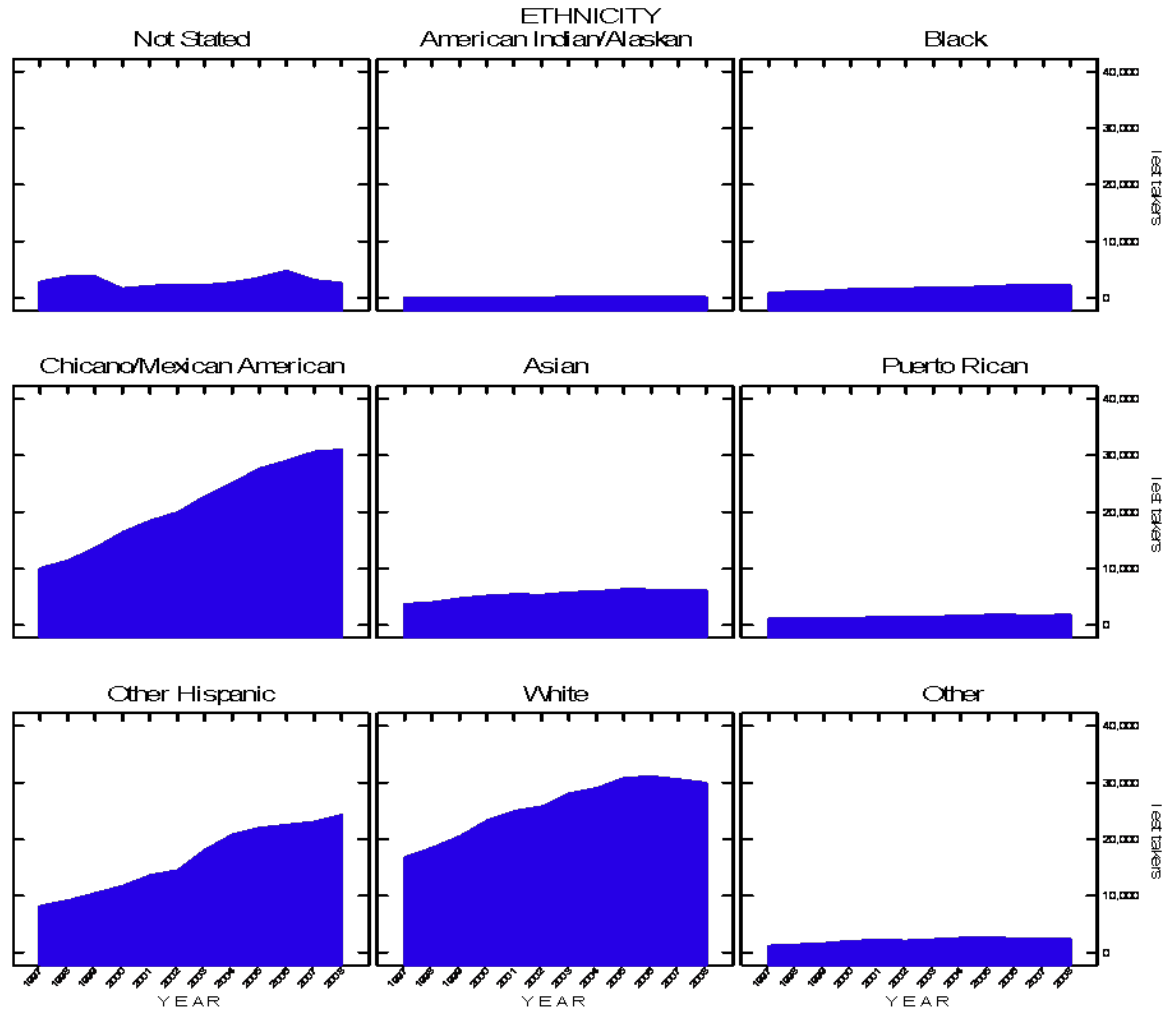
# Spanish Literature



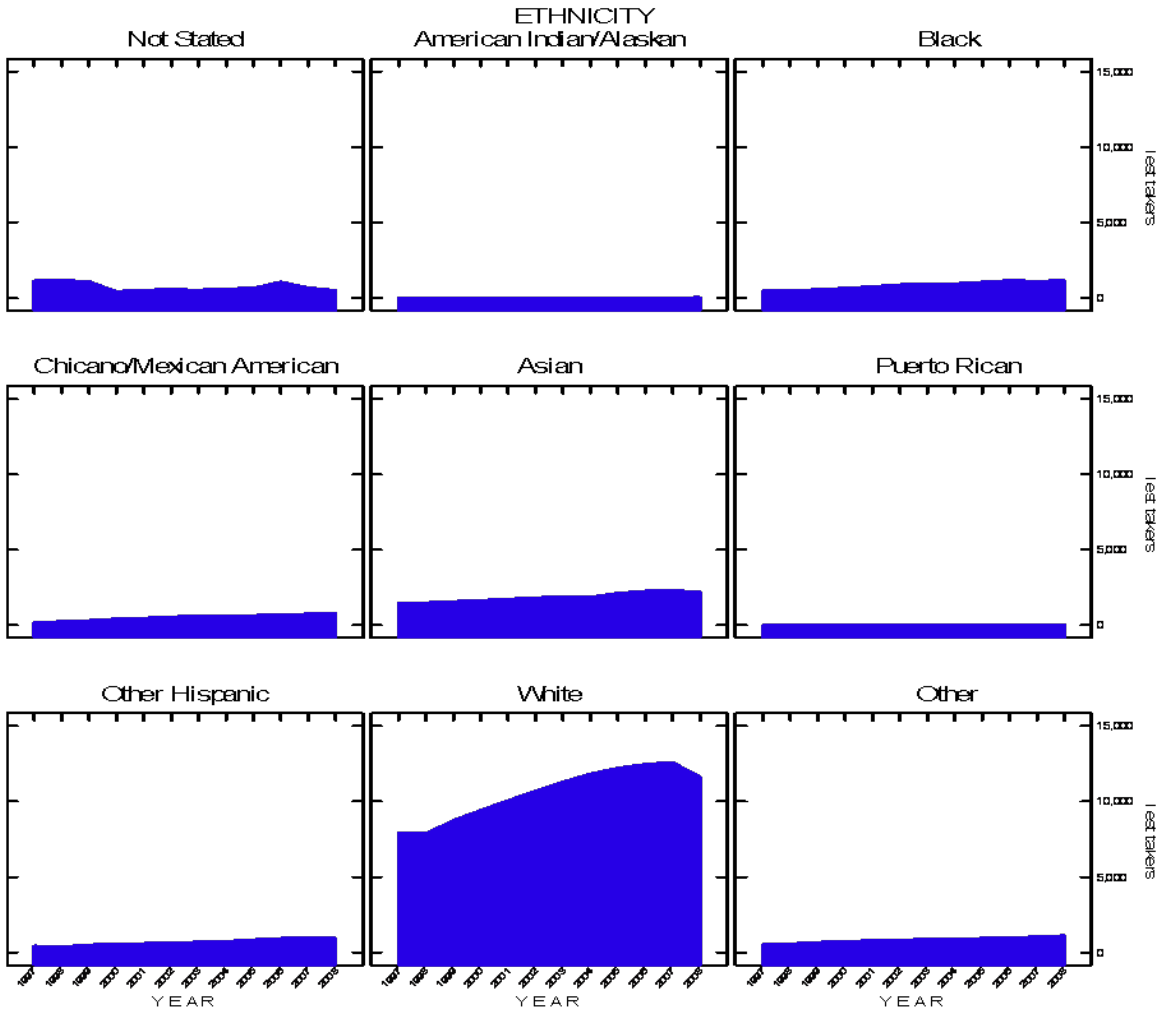
# Spanish Literature – Score 1



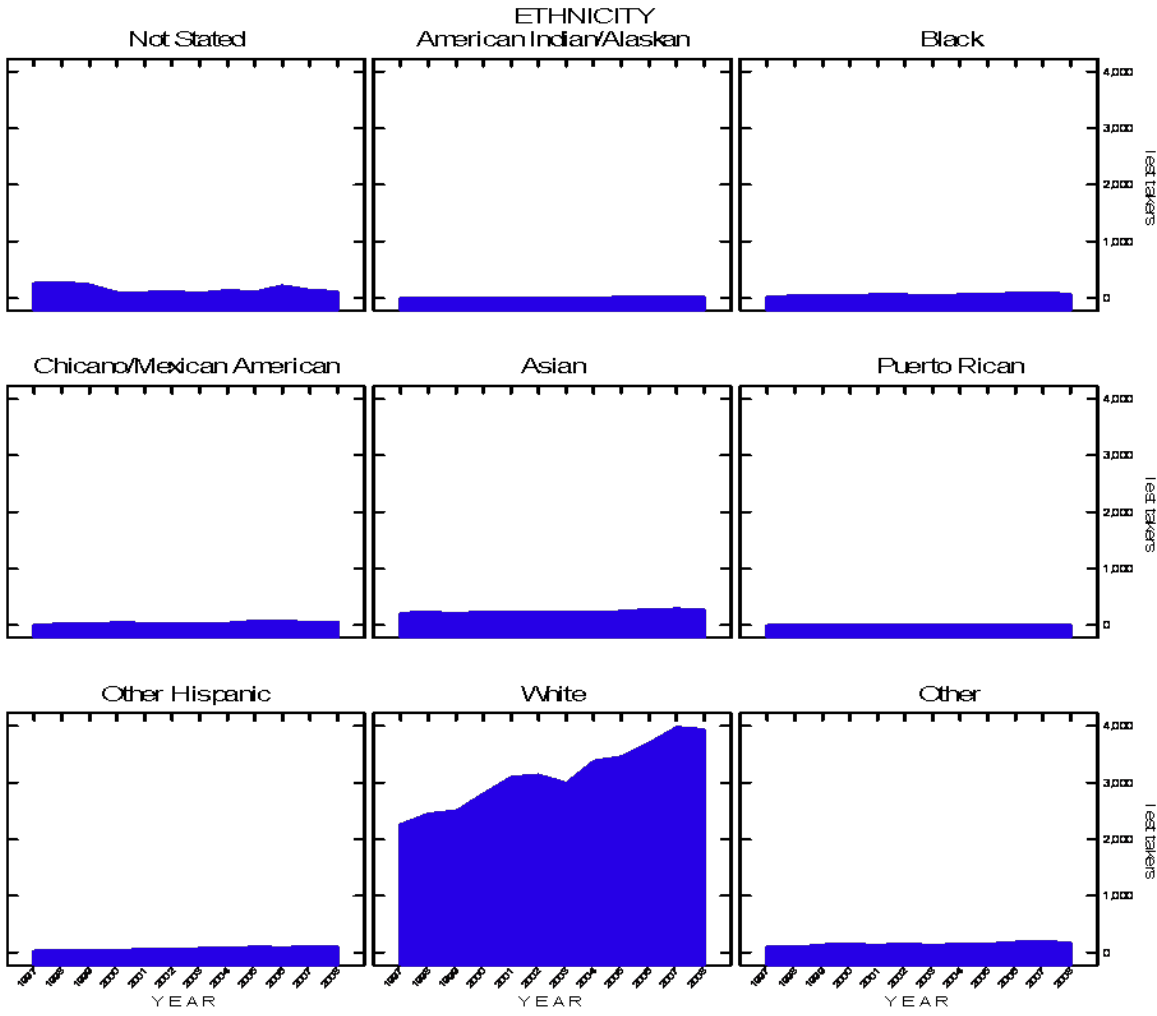
# Spanish Language



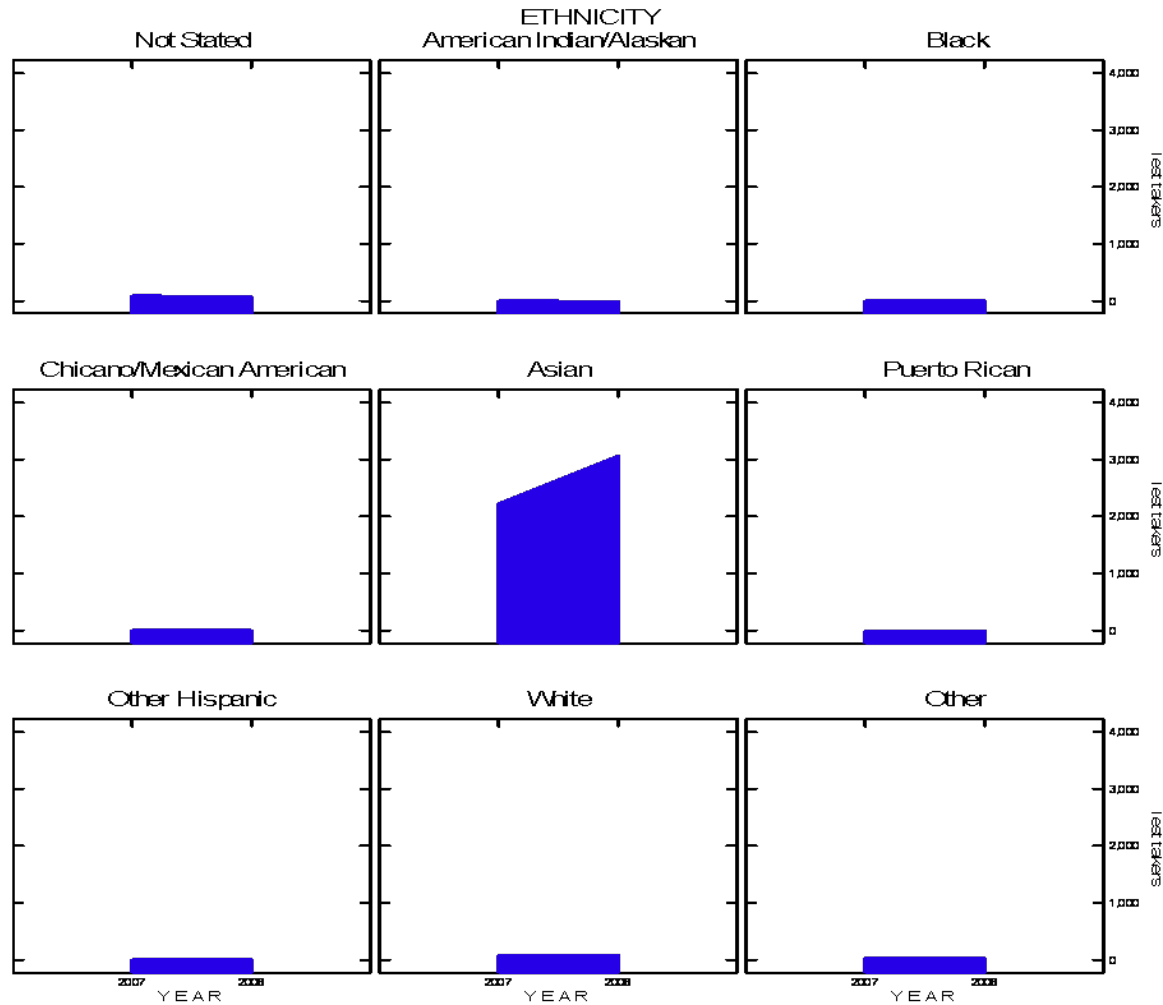
# French Language



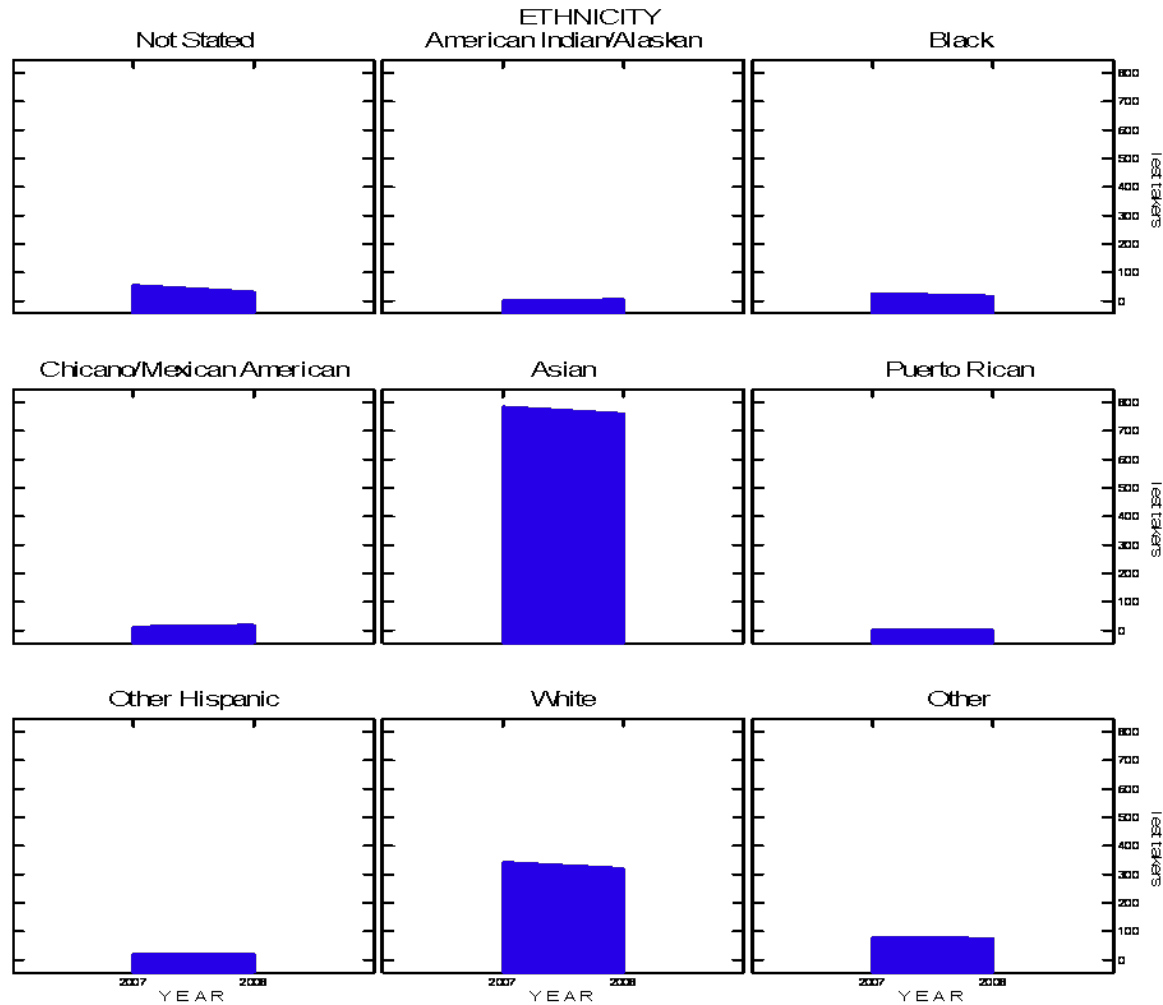
# German Language



# Chinese Language

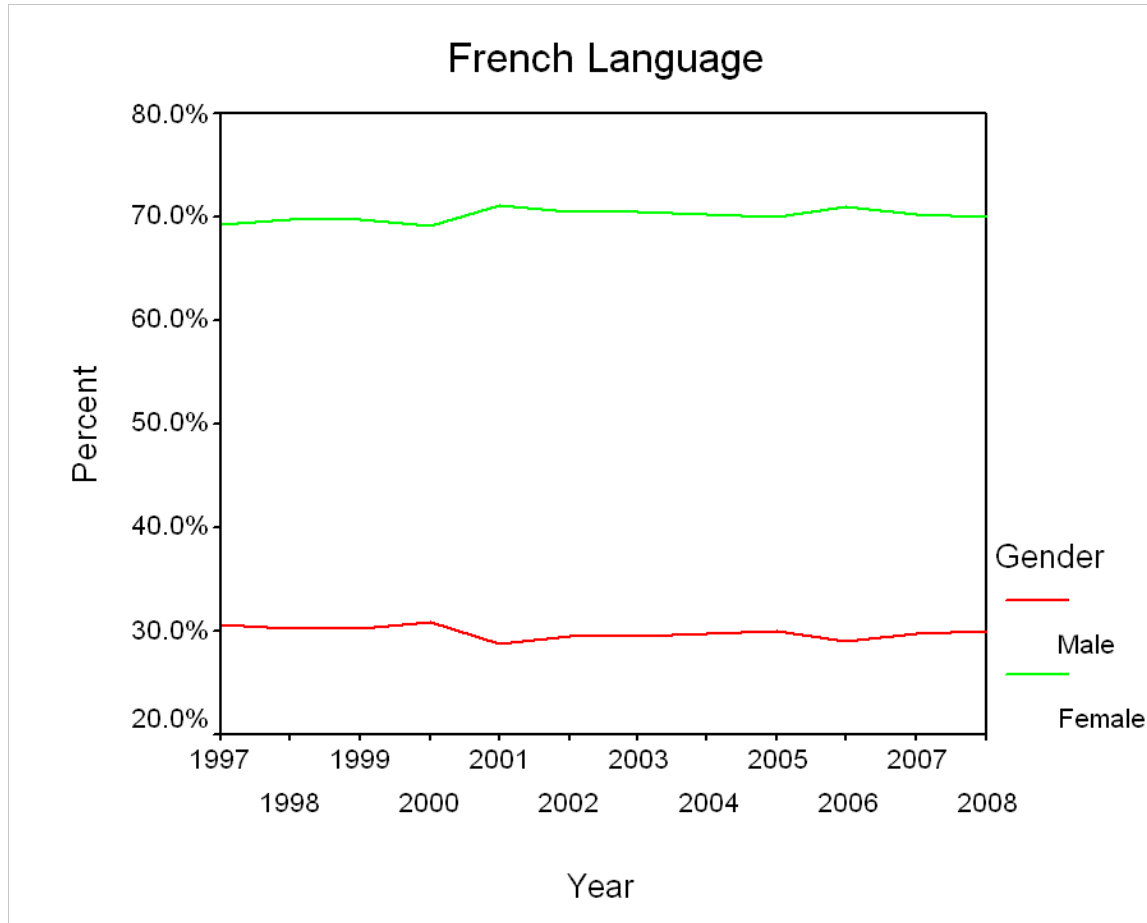


# Japanese Language

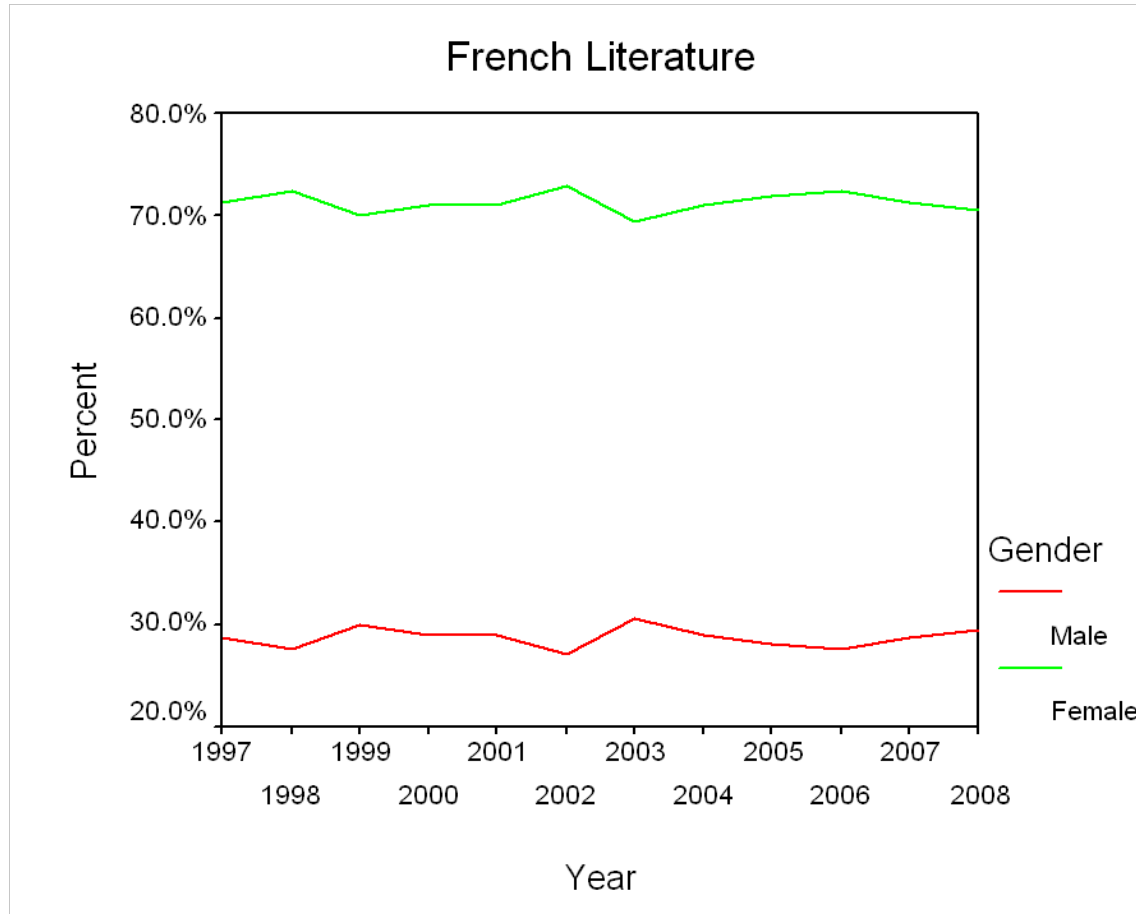


# Demographics – Gender

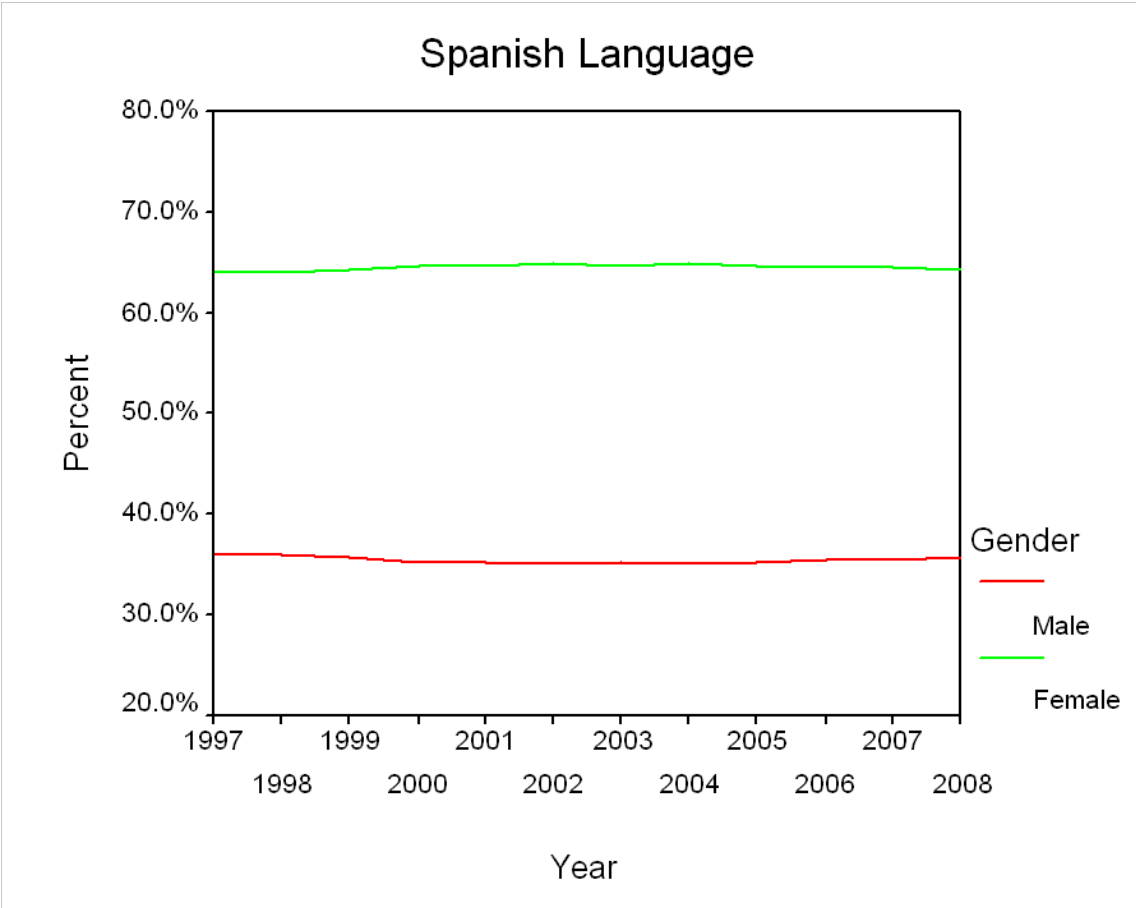
# Demographics – Gender



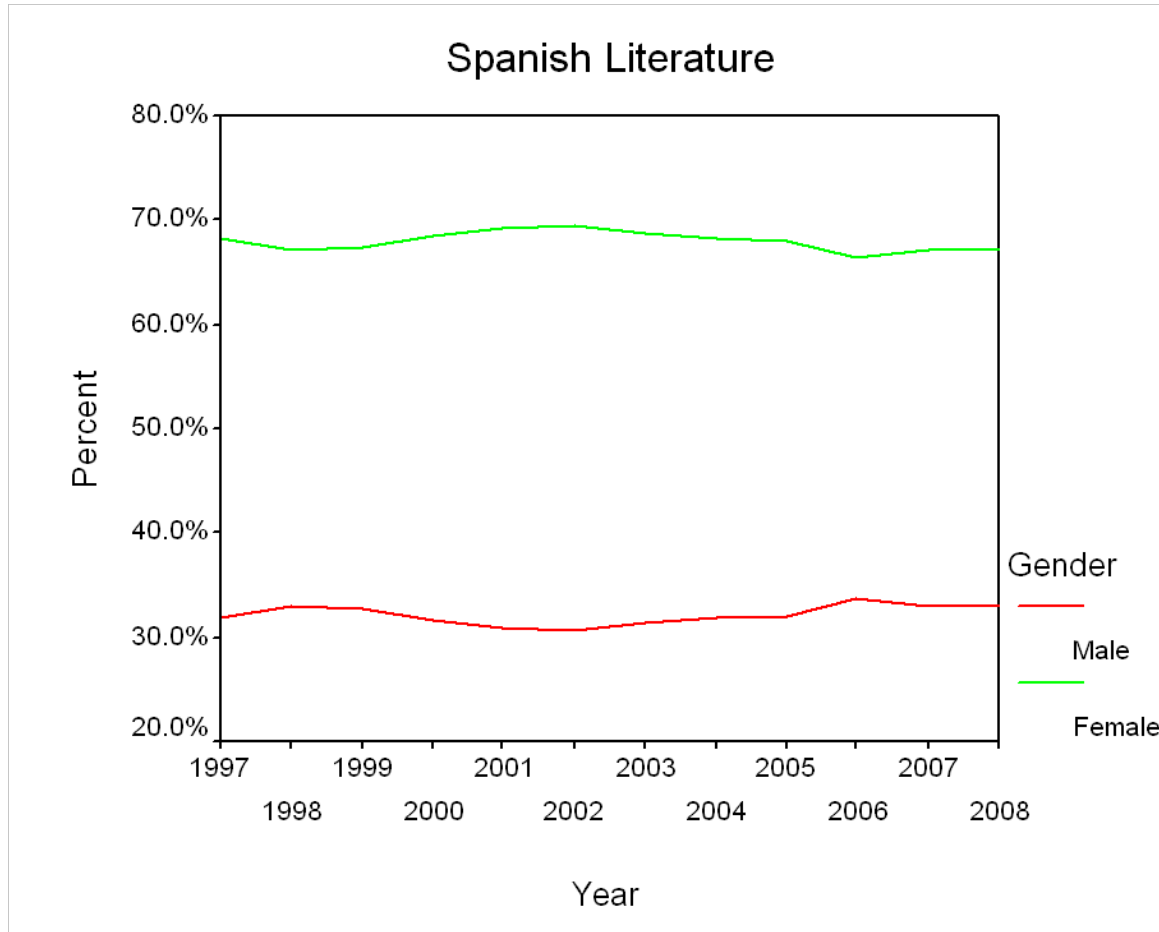
# Demographics – Gender



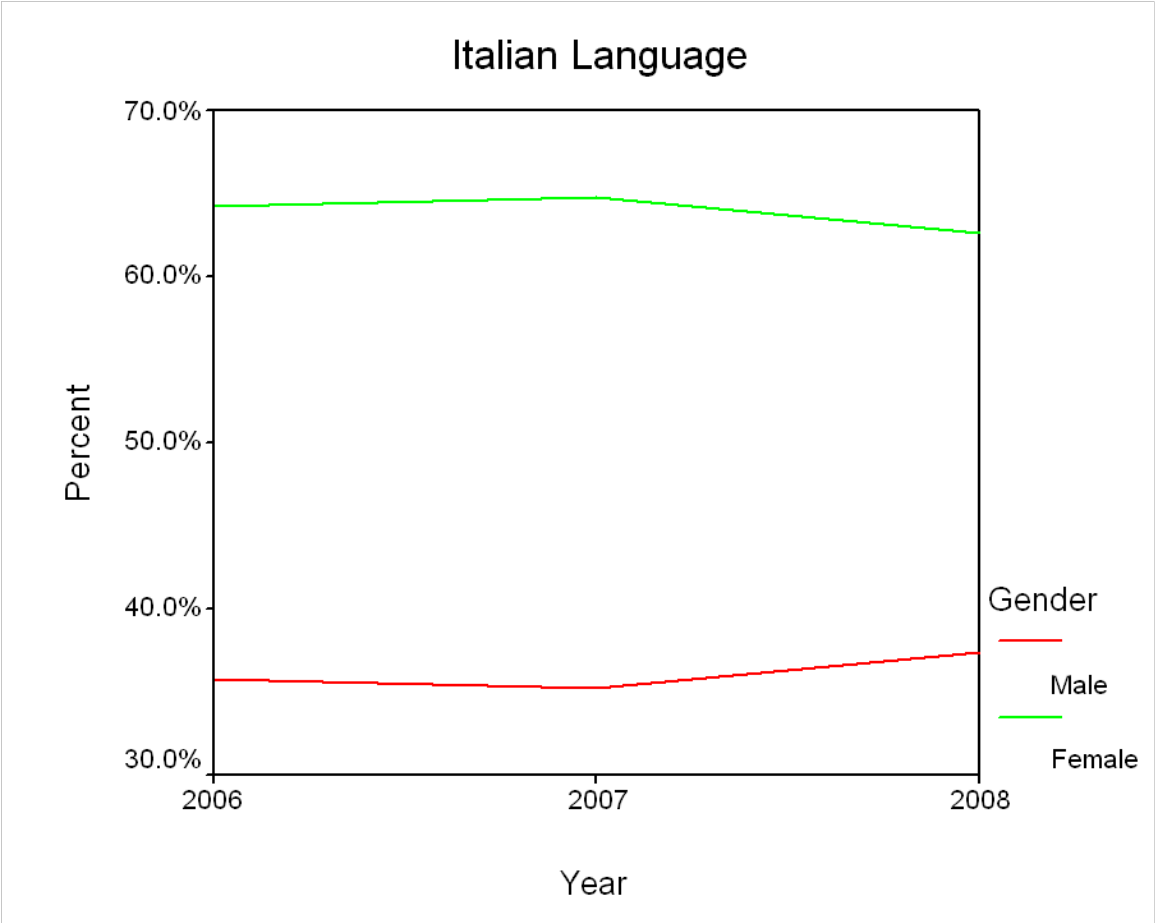
# Demographics – Gender



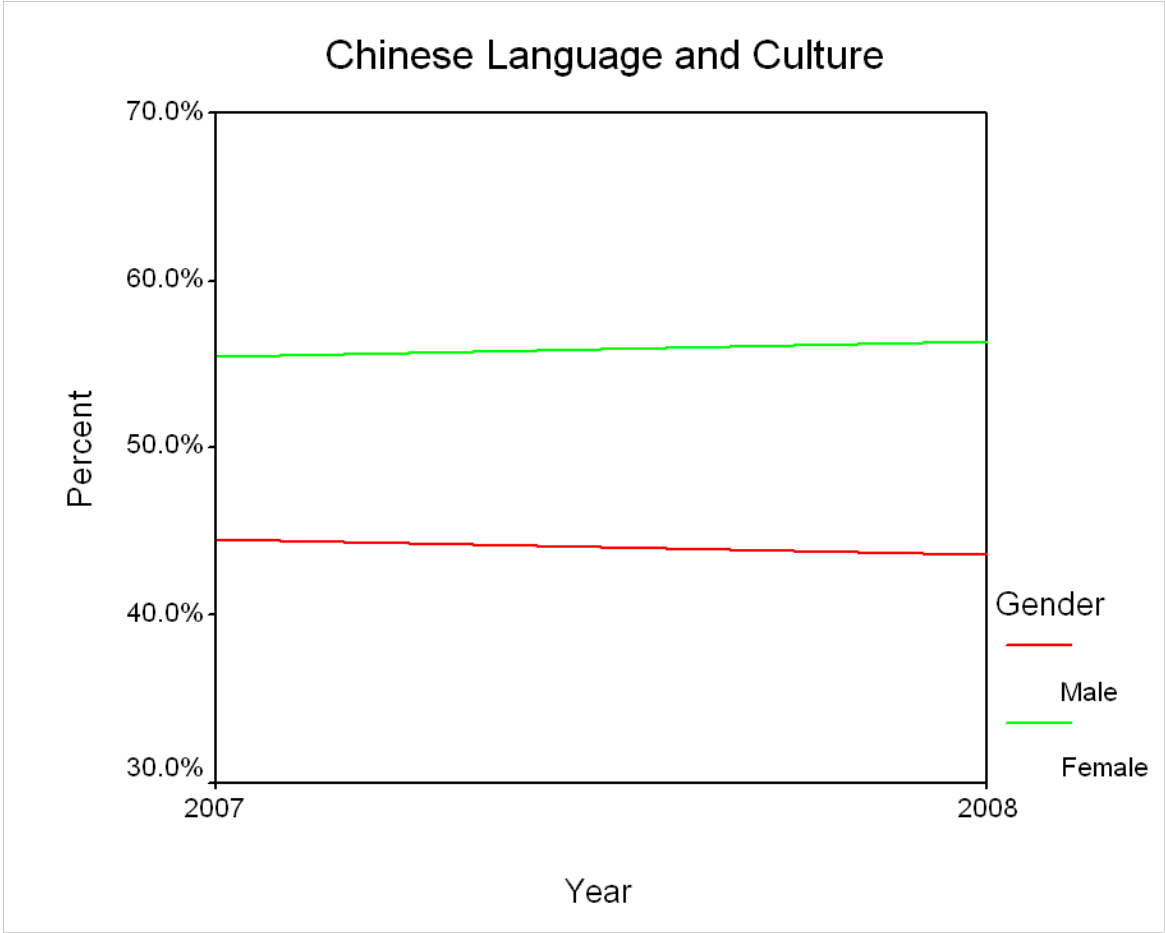
# Demographics – Gender



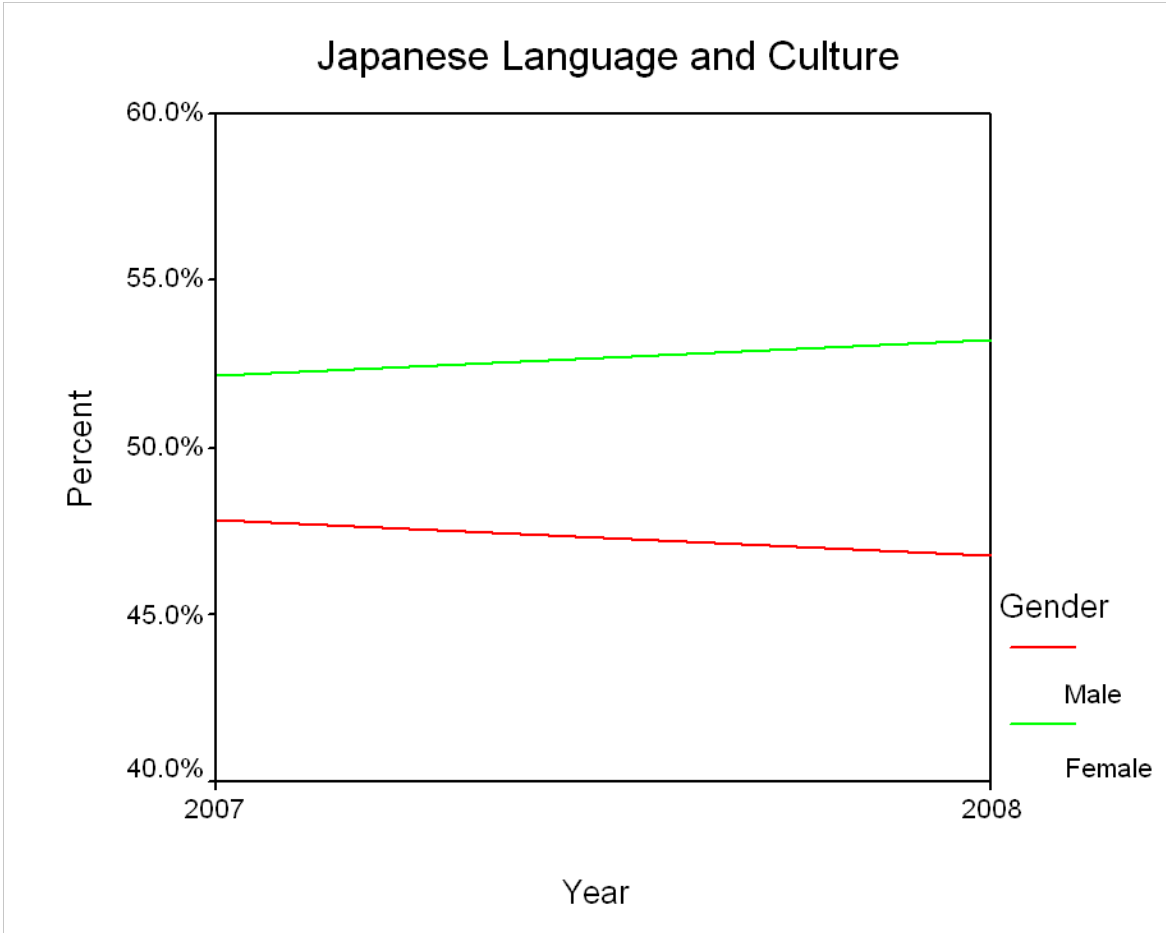
# Demographics – Gender



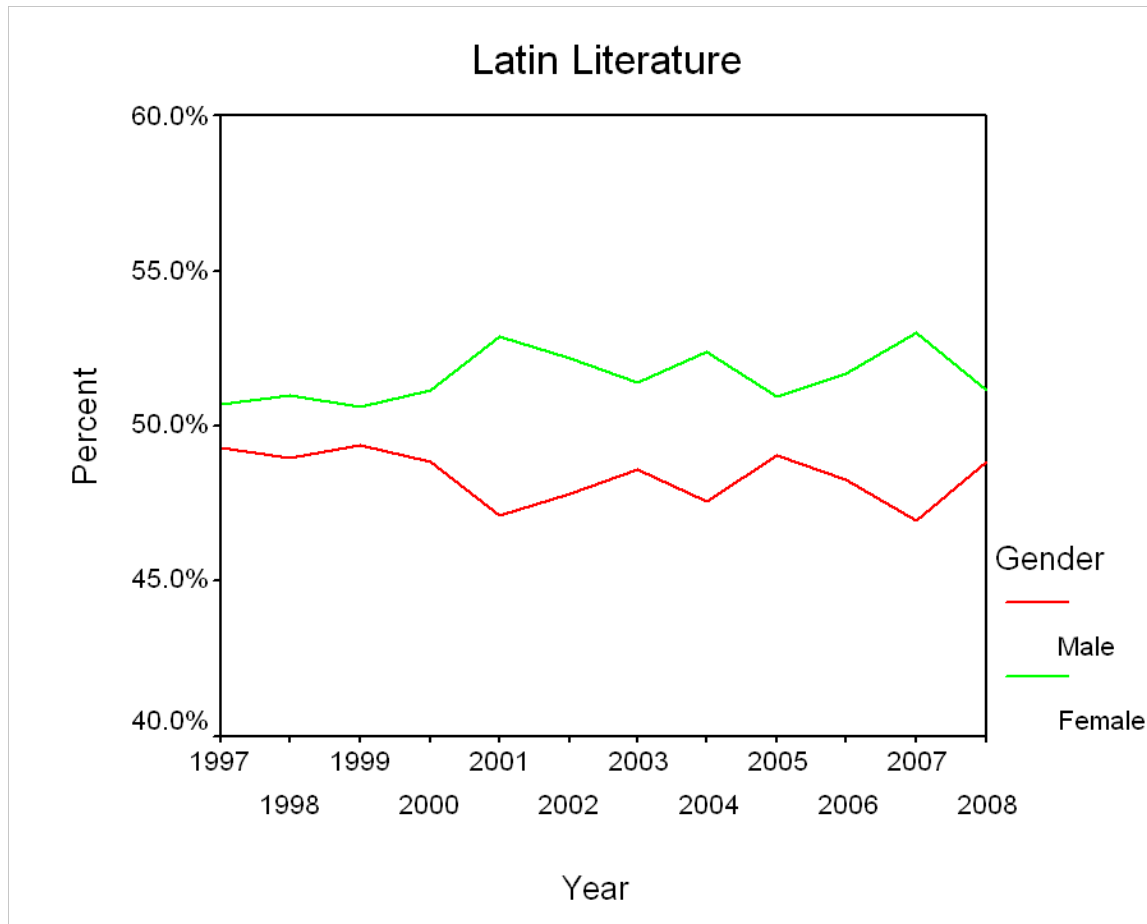
# Demographics – Gender



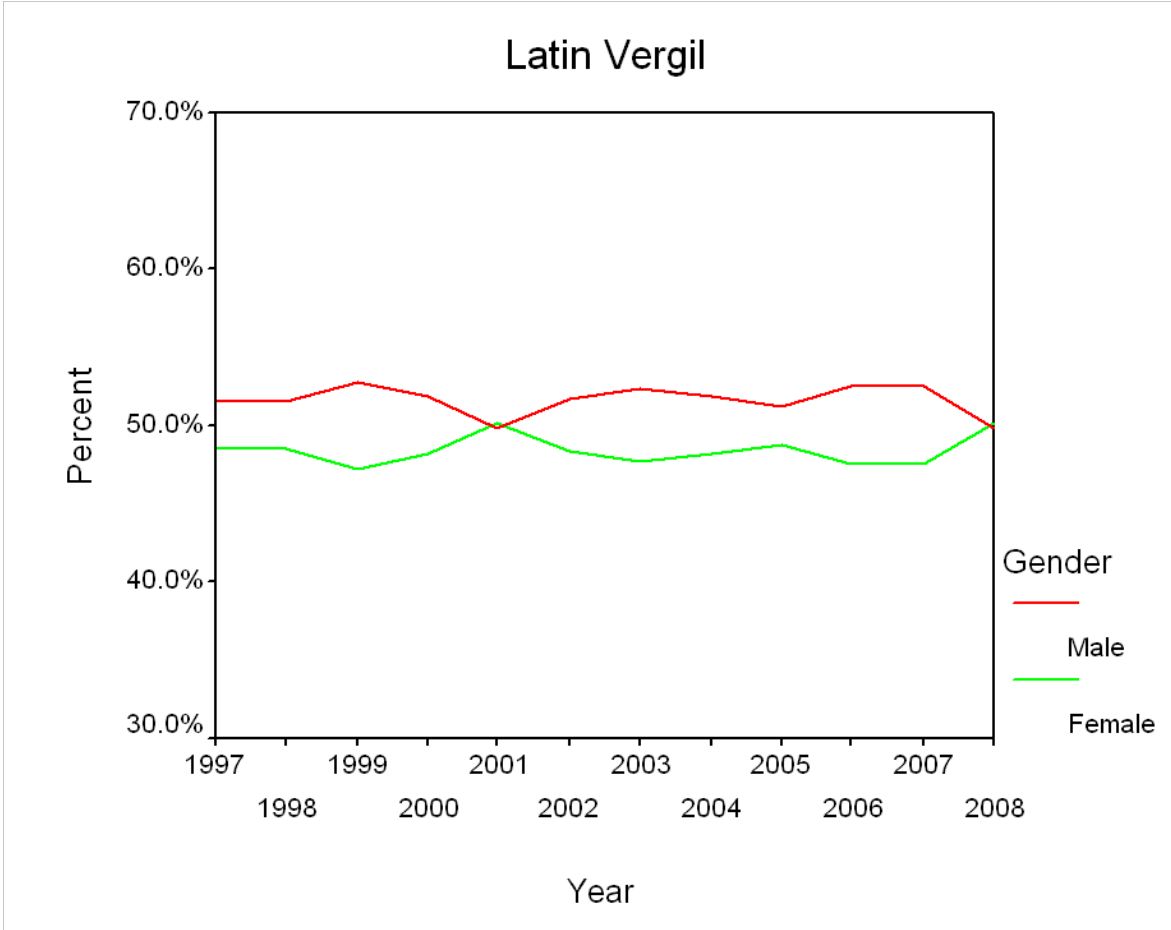
# Demographics – Gender



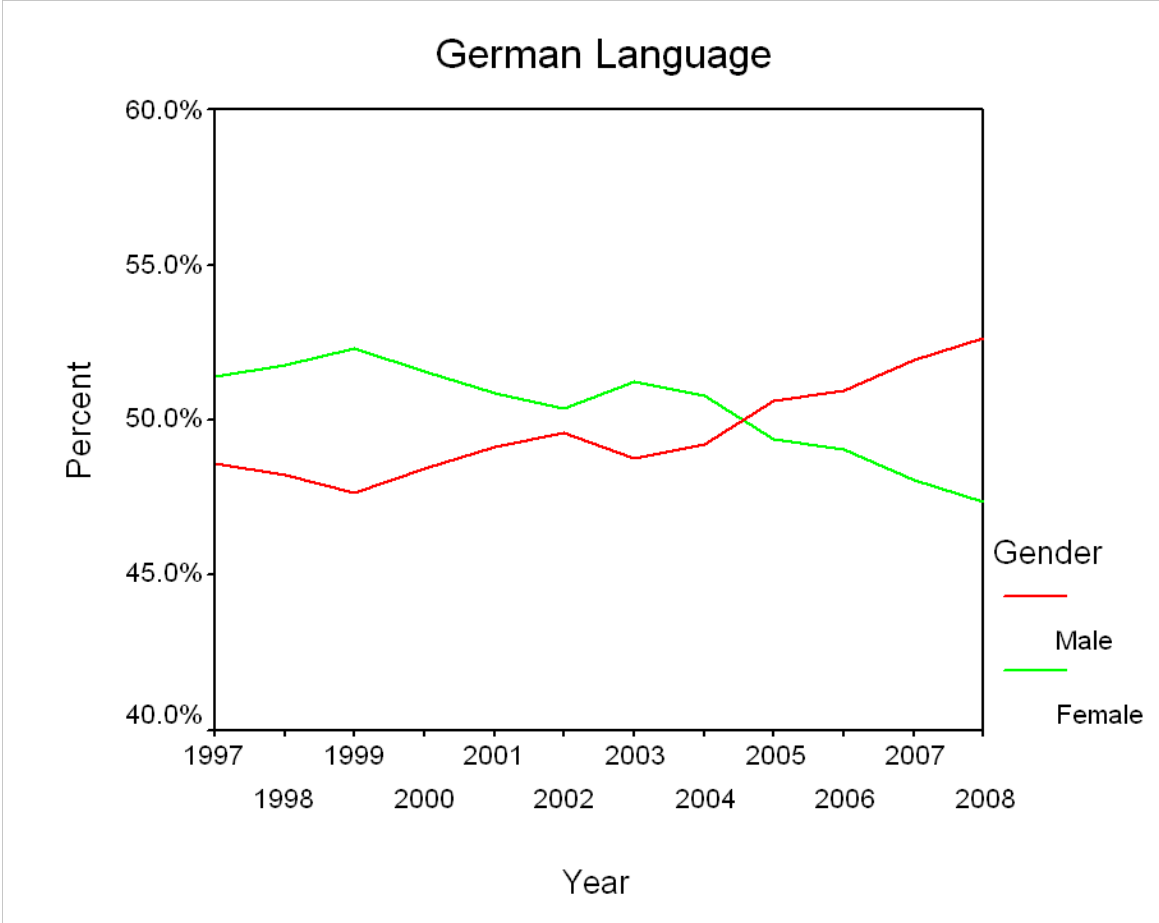
# Demographics – Gender



# Demographics – Gender



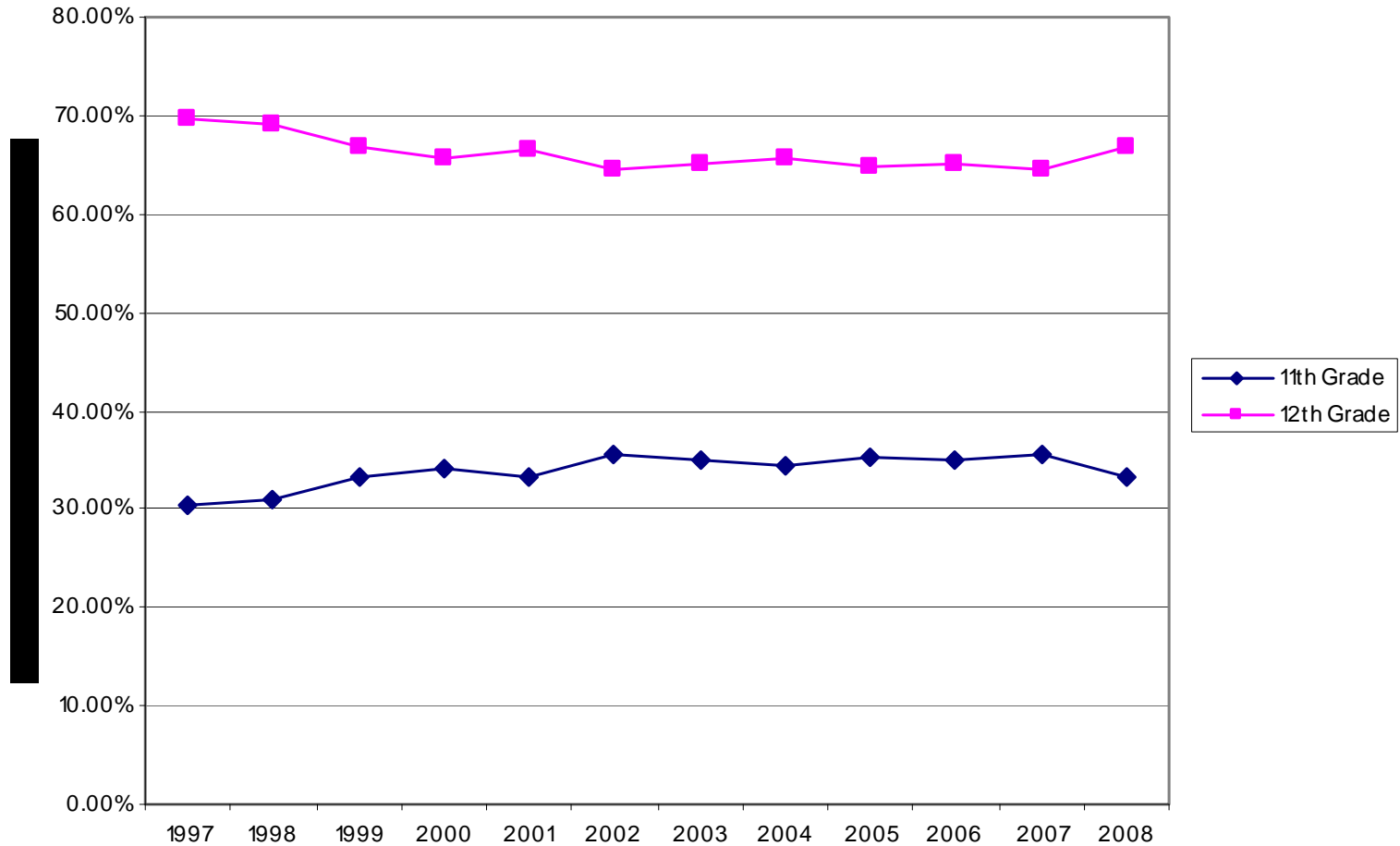
# Demographics – Gender



# Demographics – Grade Level

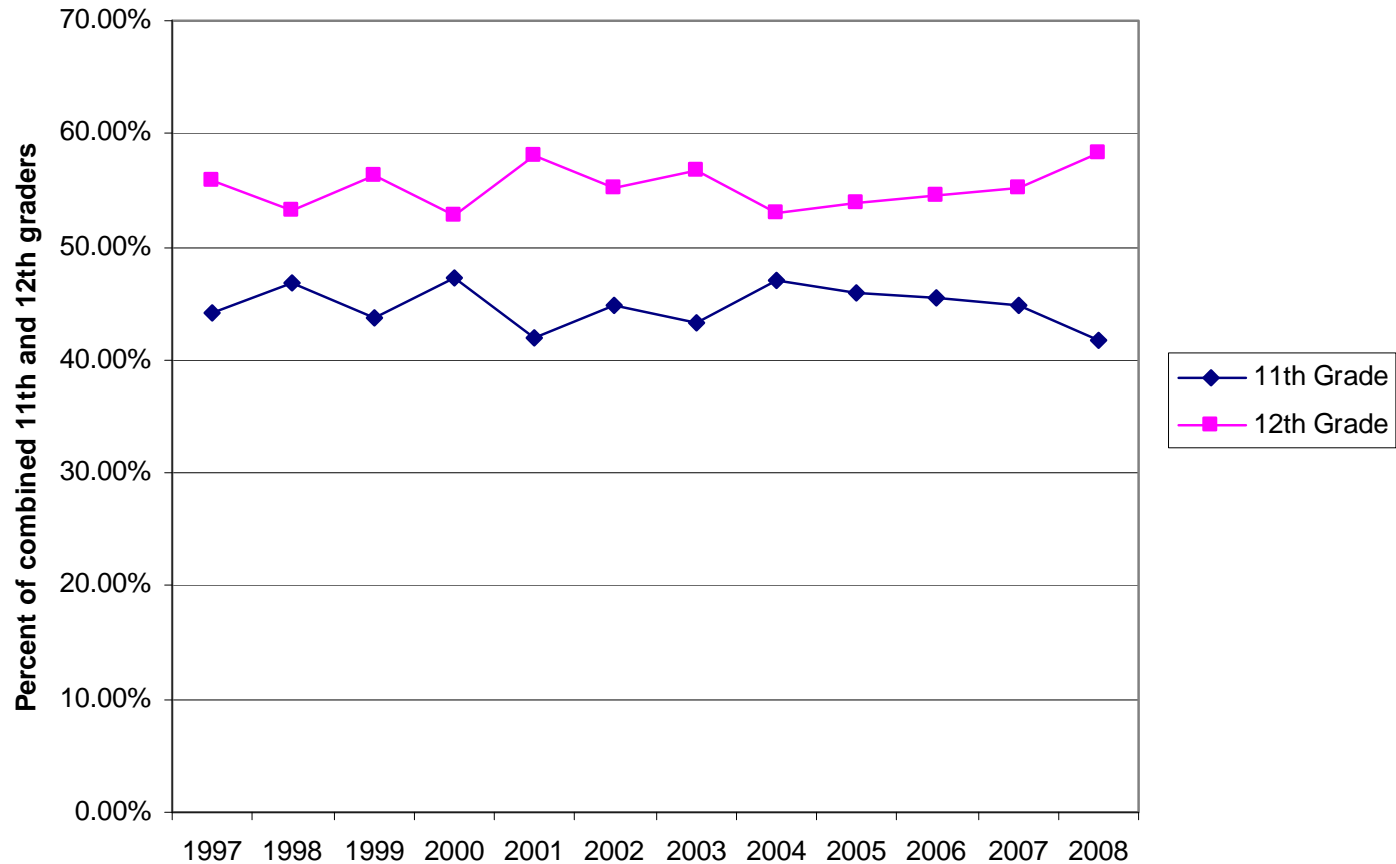
# Demographics – Grade Level

## Spanish Literature



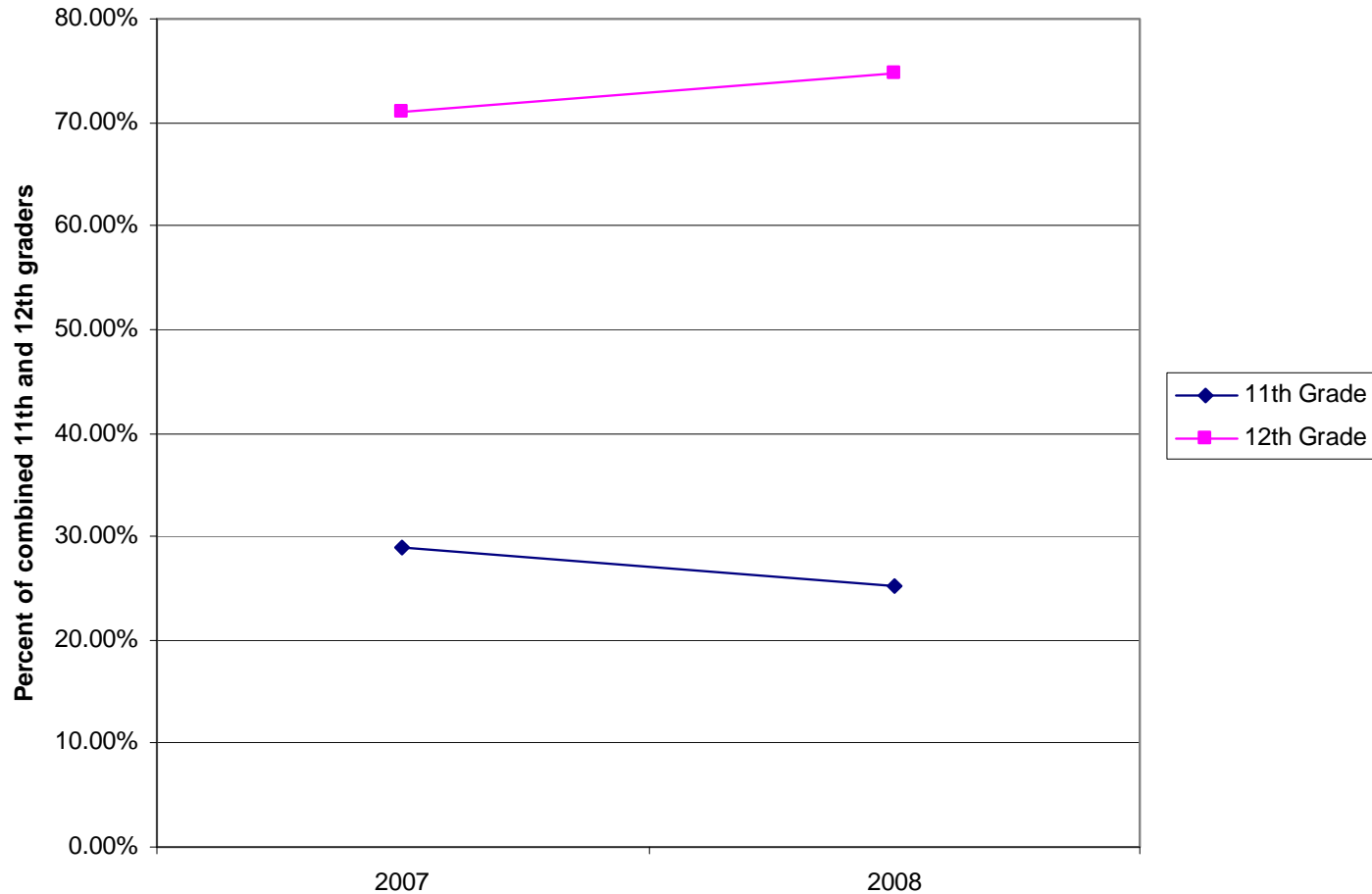
# Demographics – Grade Level

Latin Literature



# Demographics – Grade Level

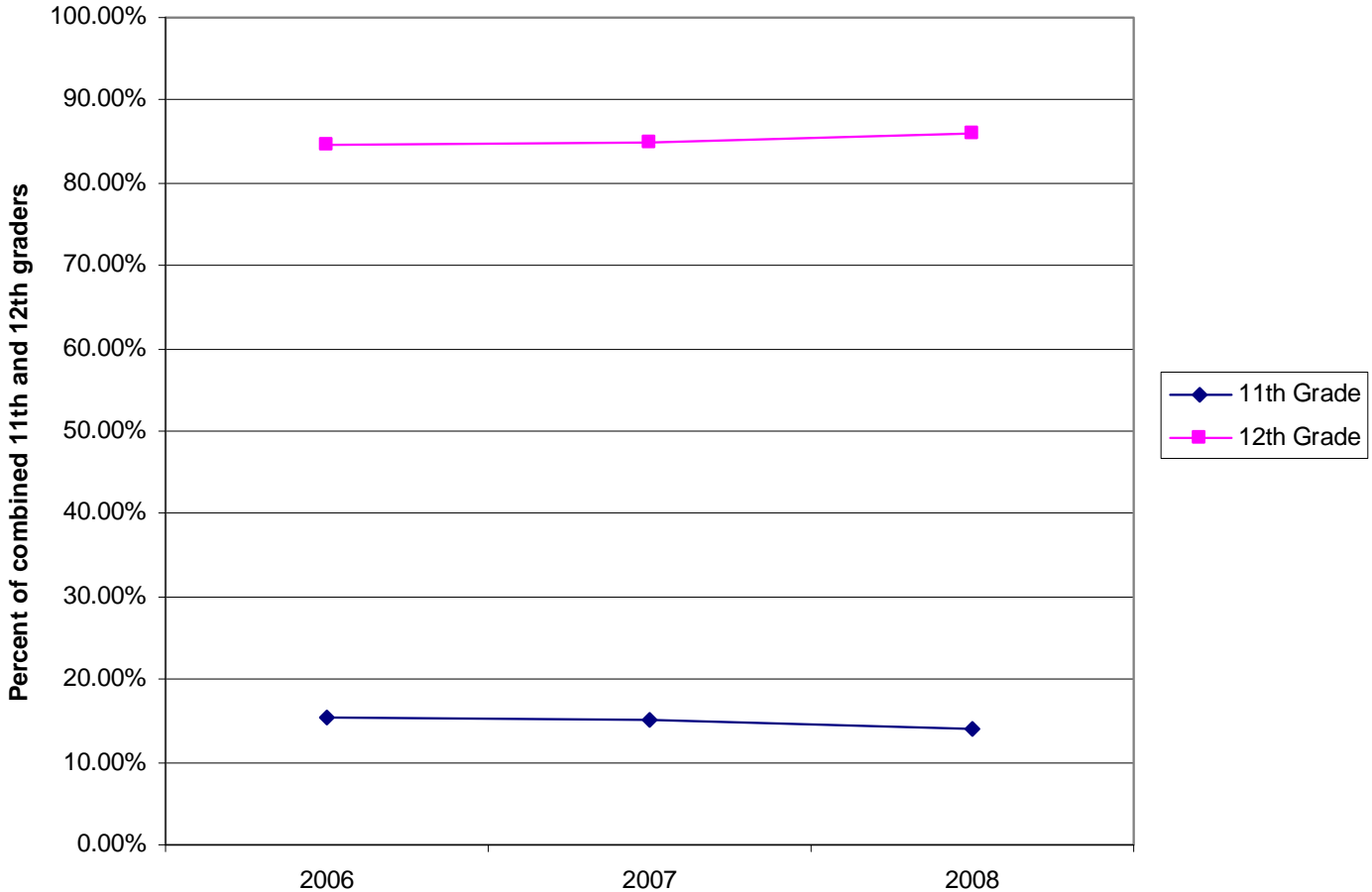
Japanese Language & Culture



# Demographics – Grade Level

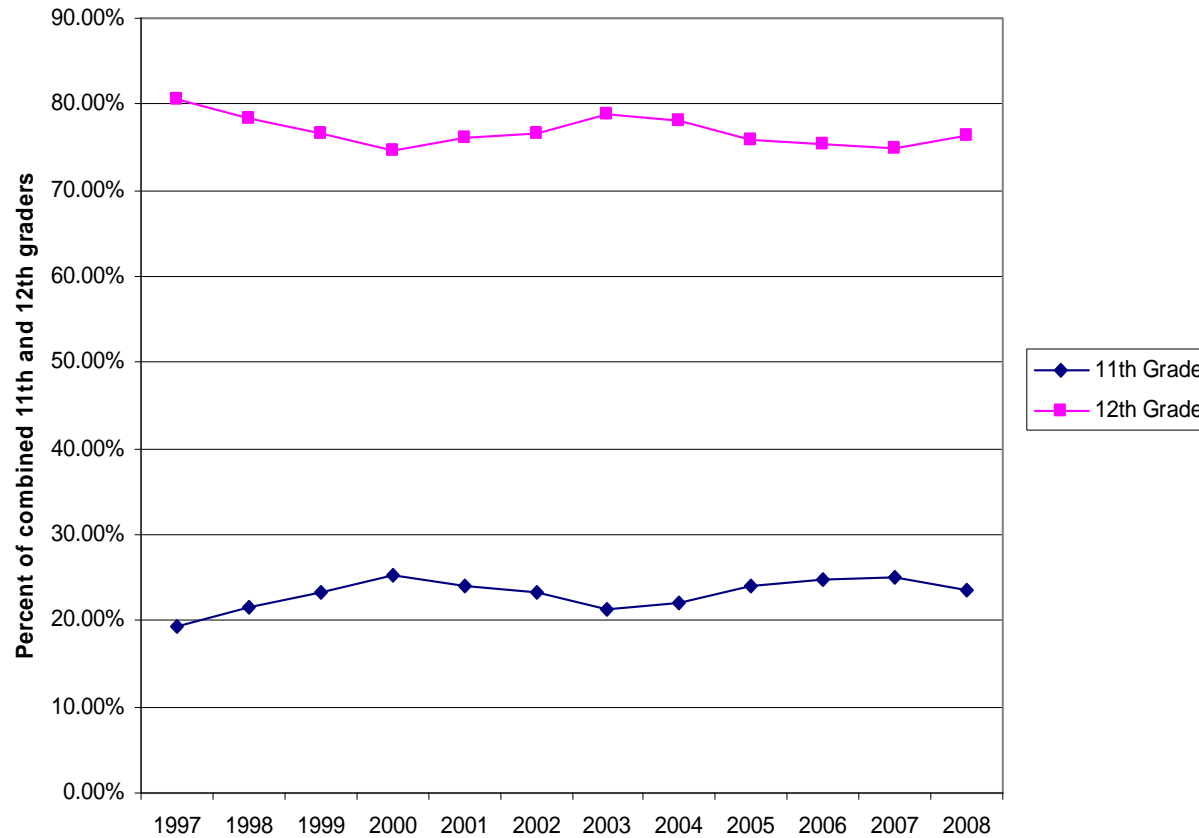


Italian Language and Culture



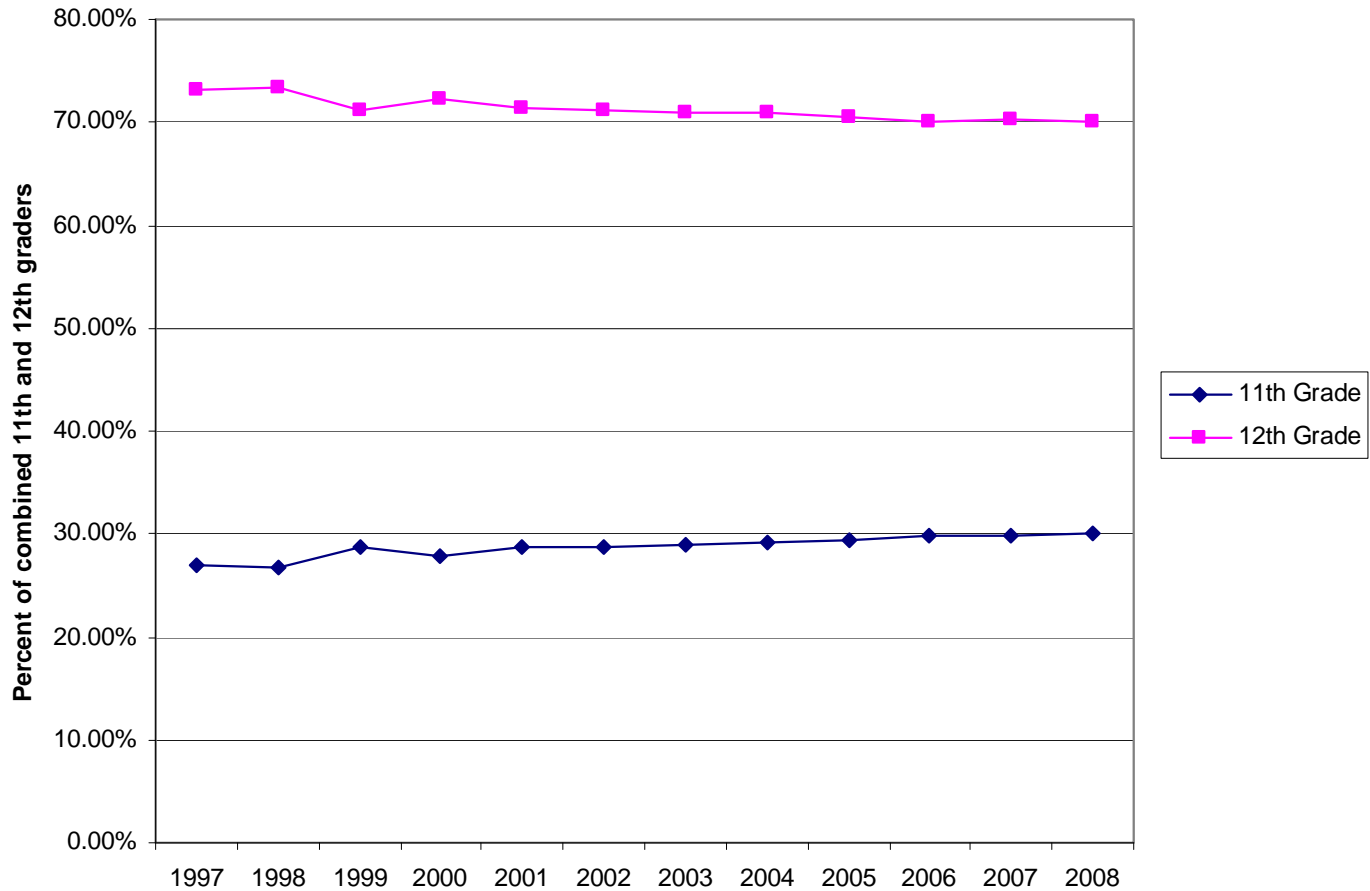
# Demographics – Grade Level

German Language



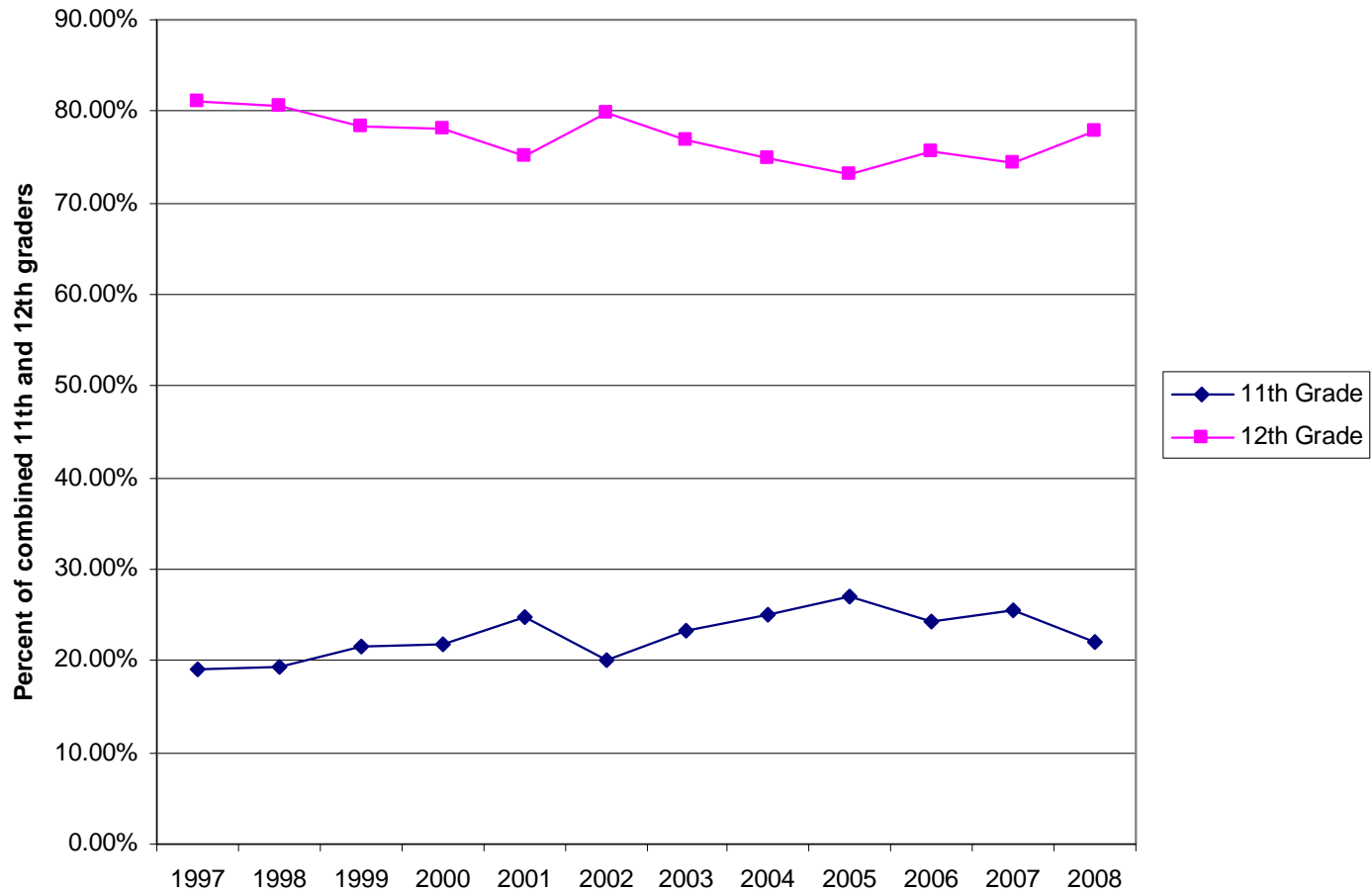
# Demographics – Grade Level

French Language



# Demographics – Grade Level

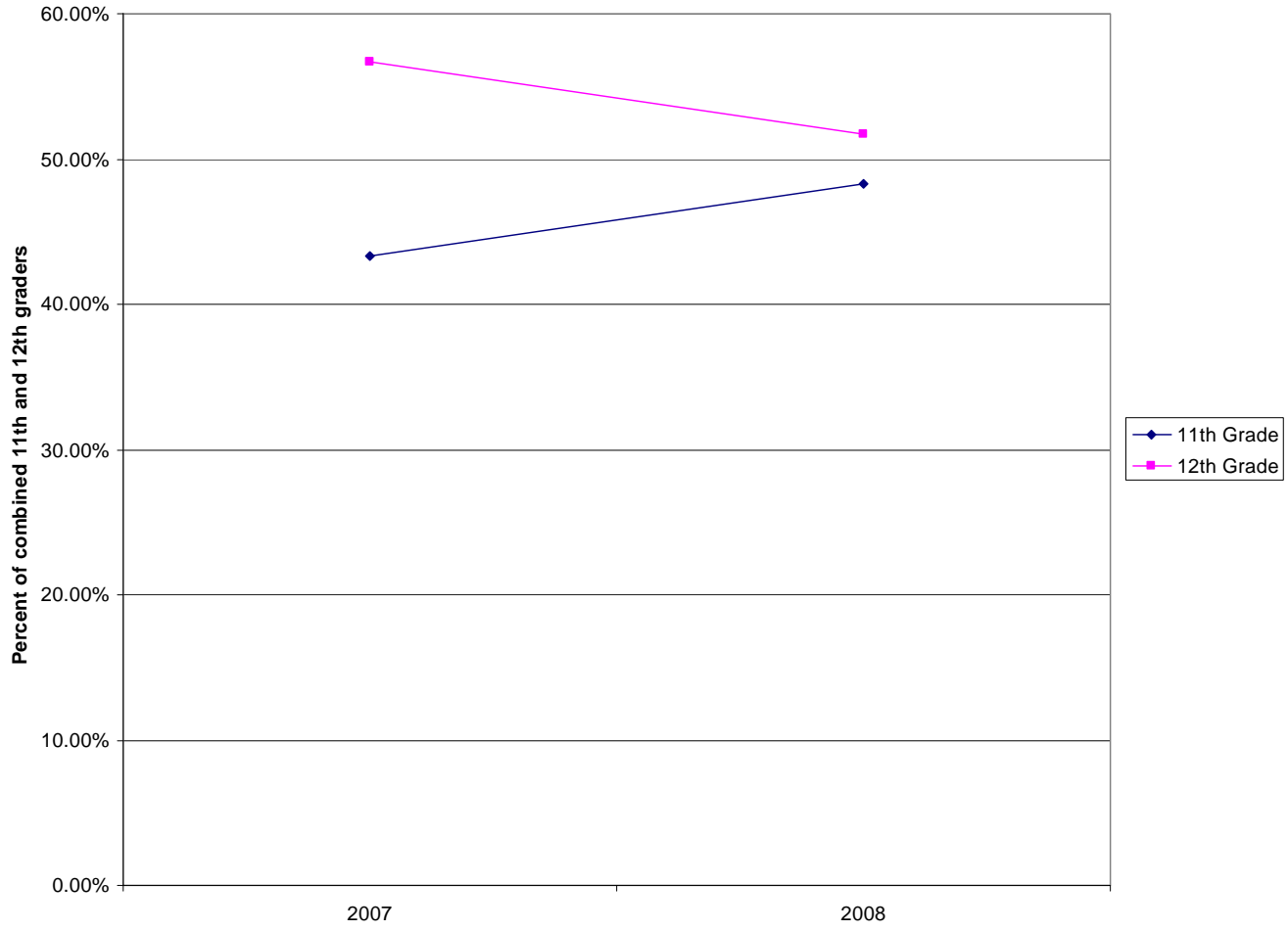
### French Literature



# Demographics – Grade Level

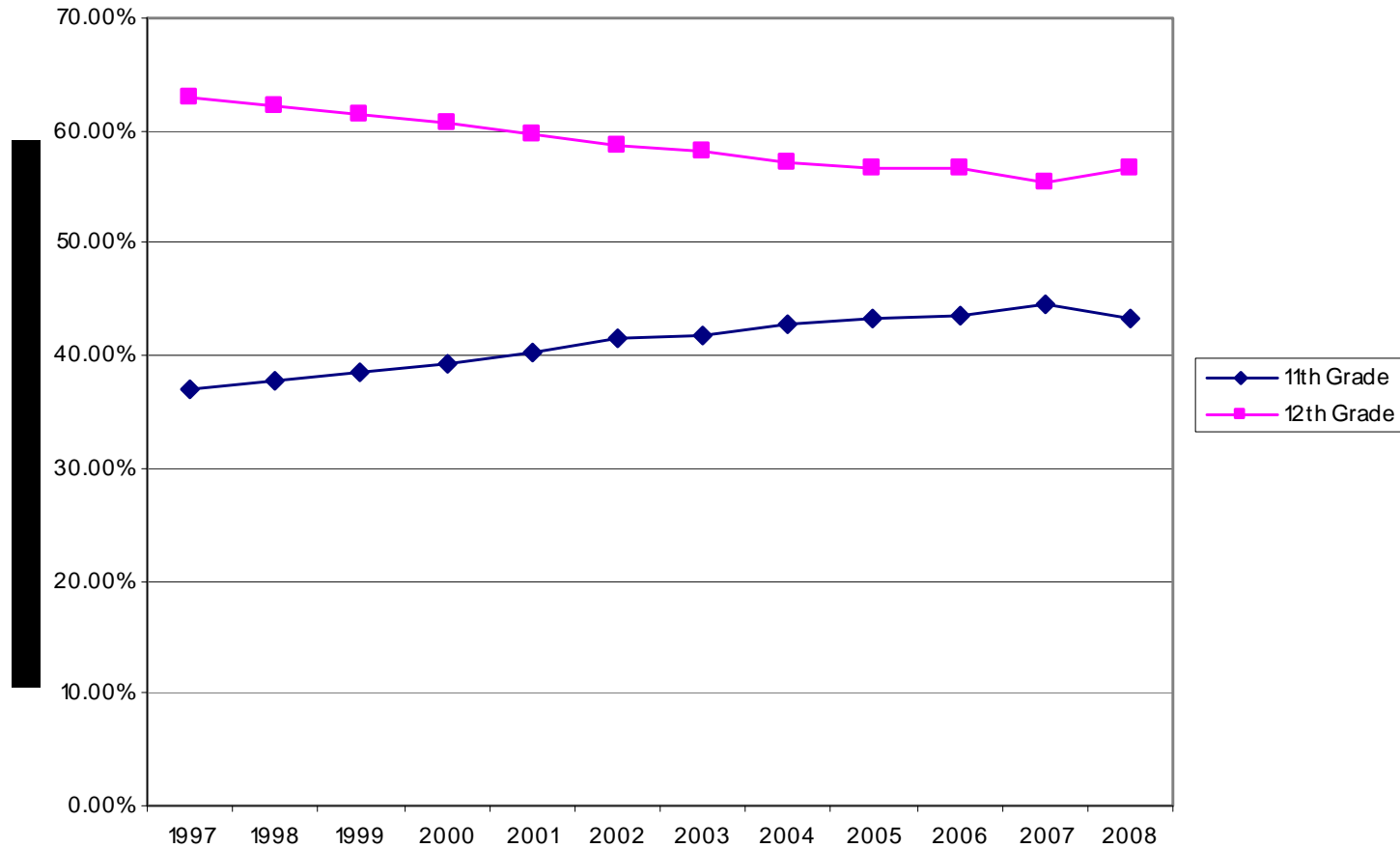


Chinese Language and Culture



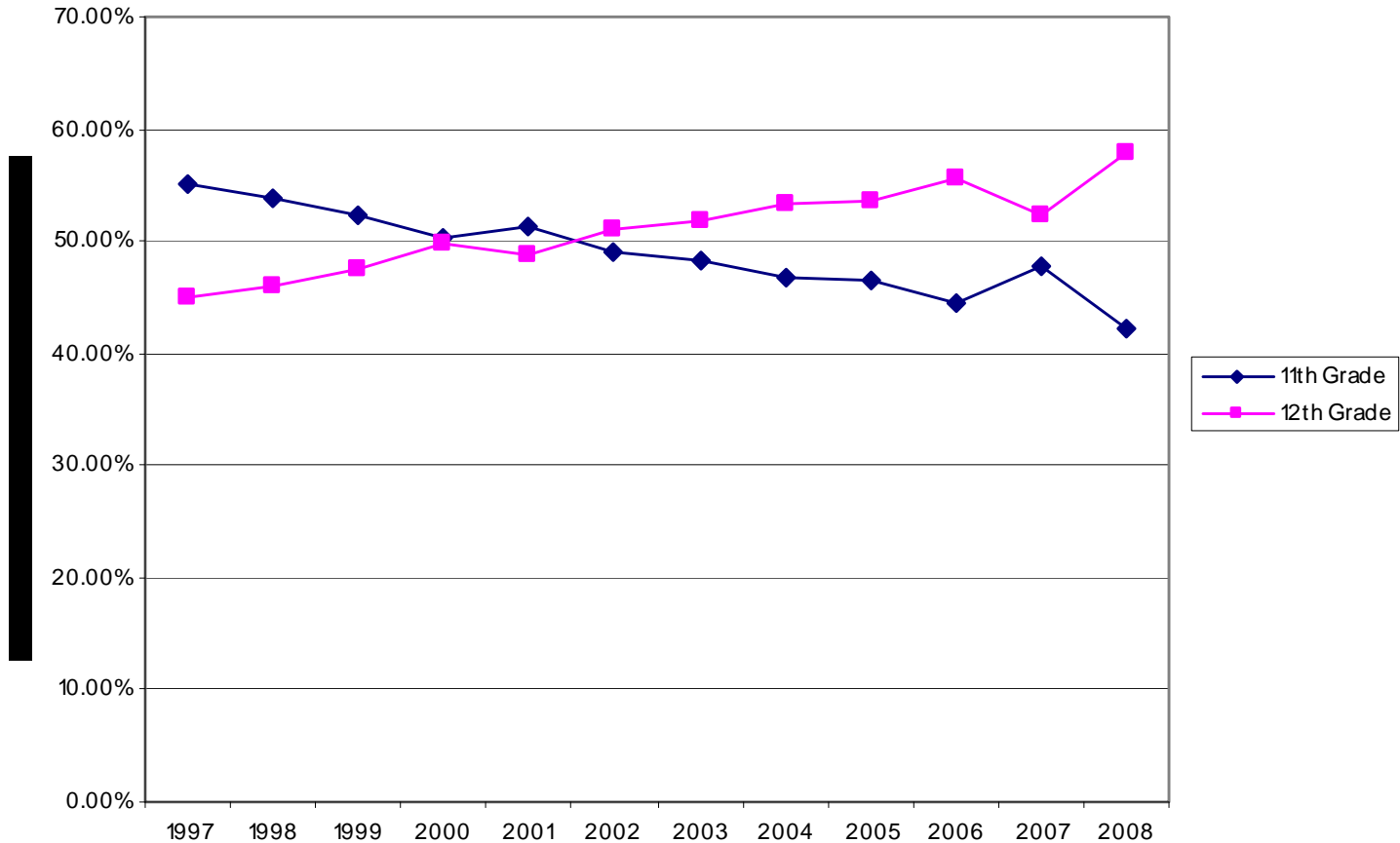
# Demographics – Grade Level

## Spanish Language



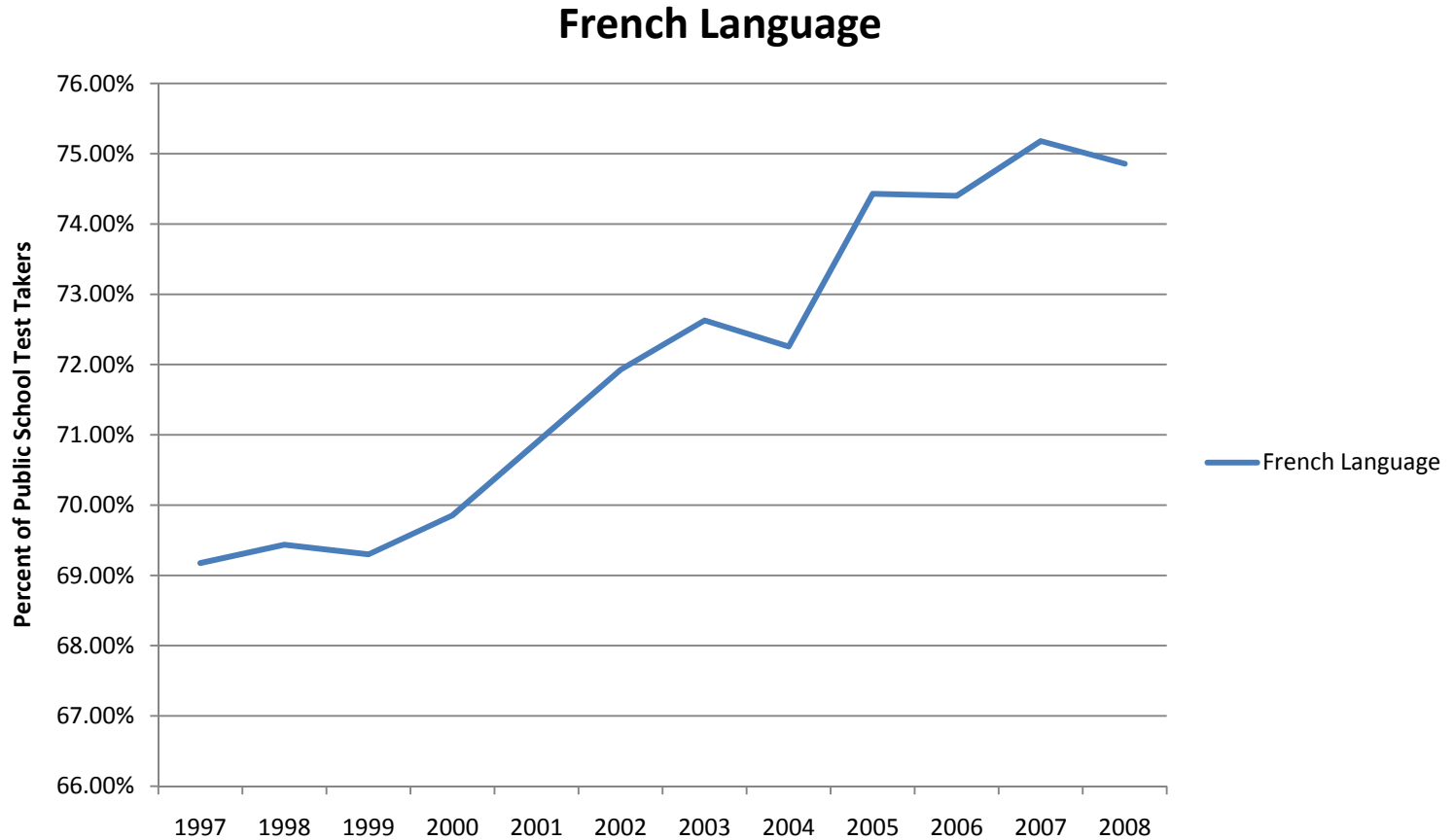
# Demographics – Grade Level

Latin Vergil

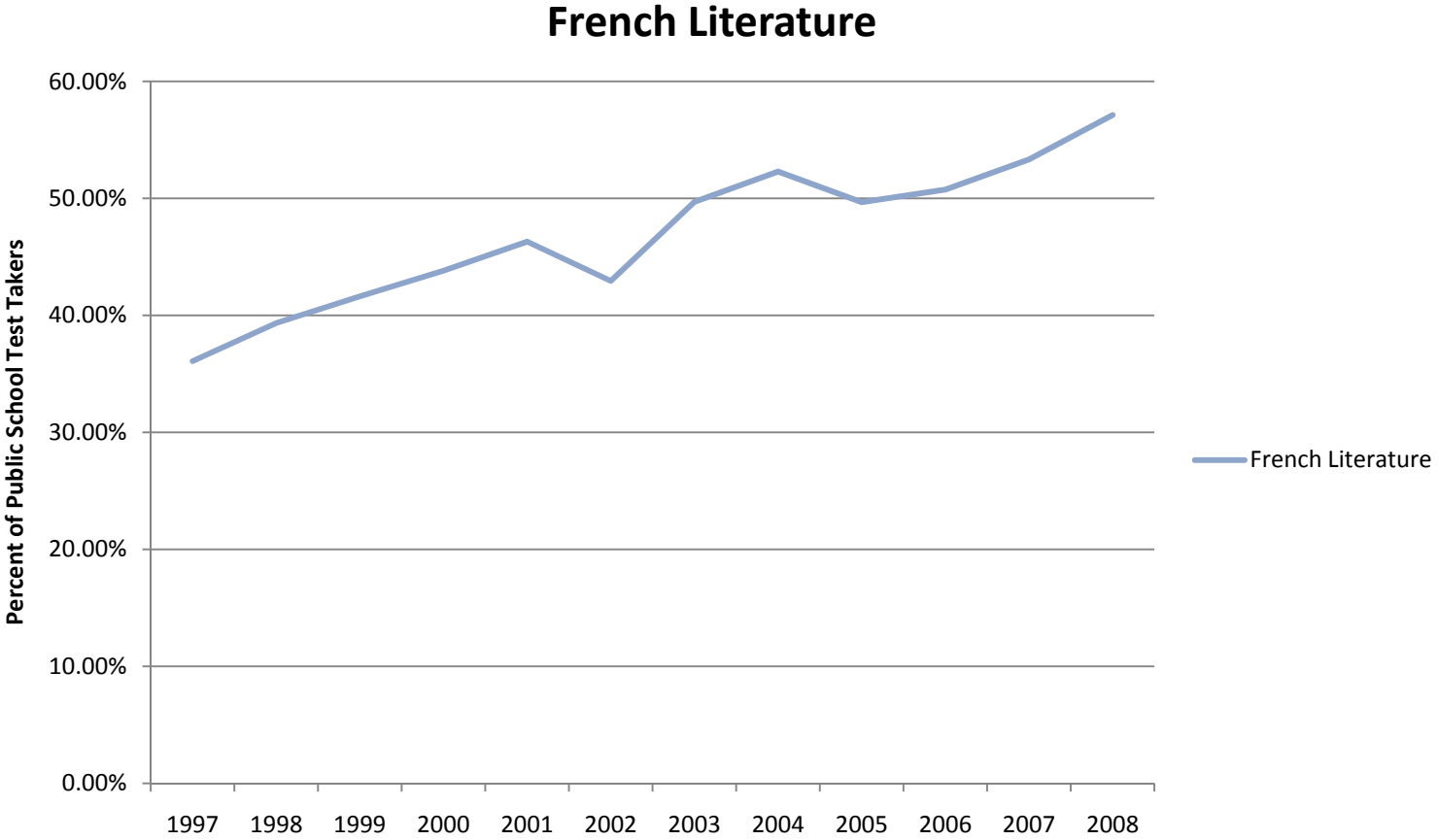


# Demographics – School Type

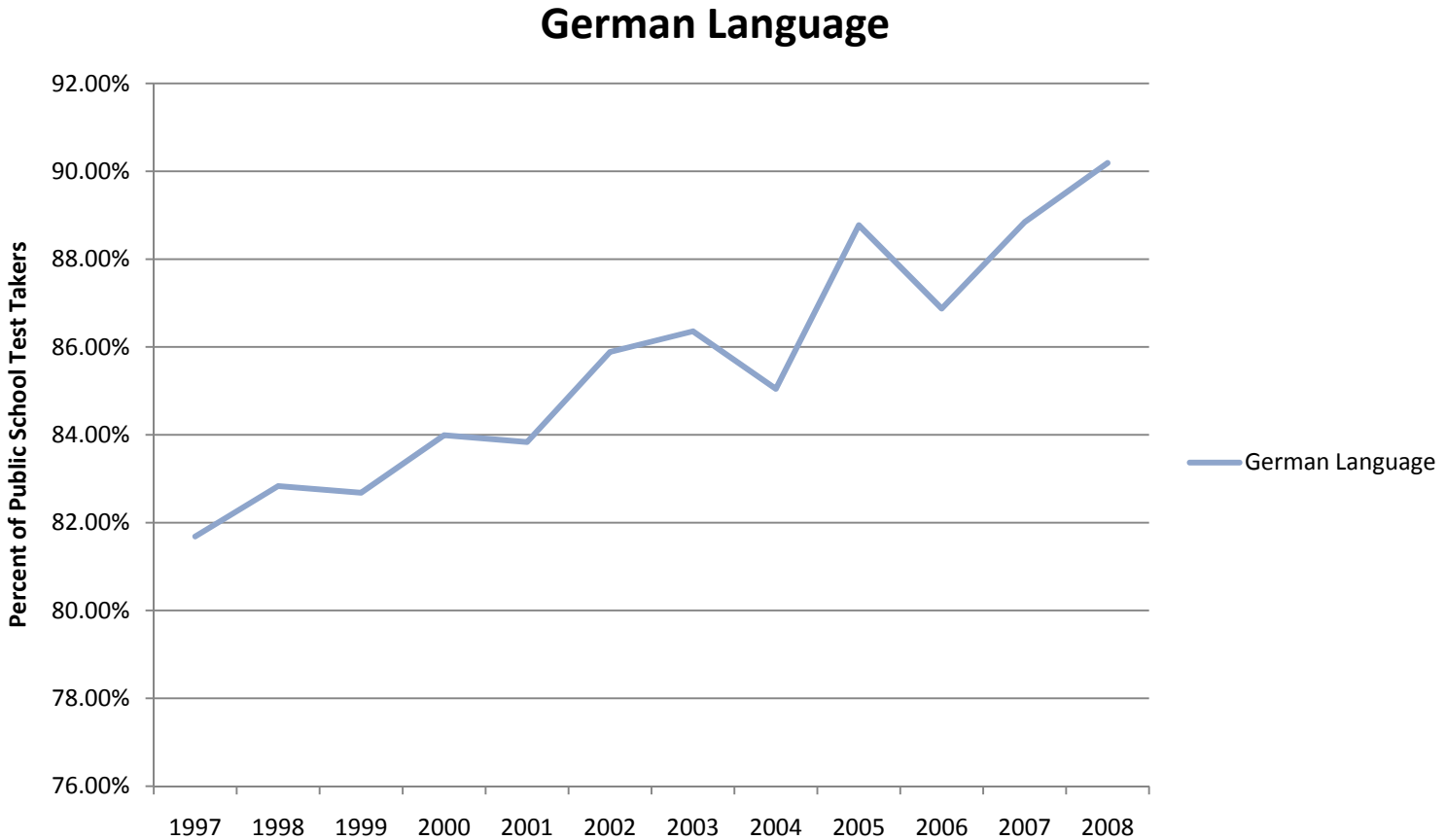
# Demographics – School Type



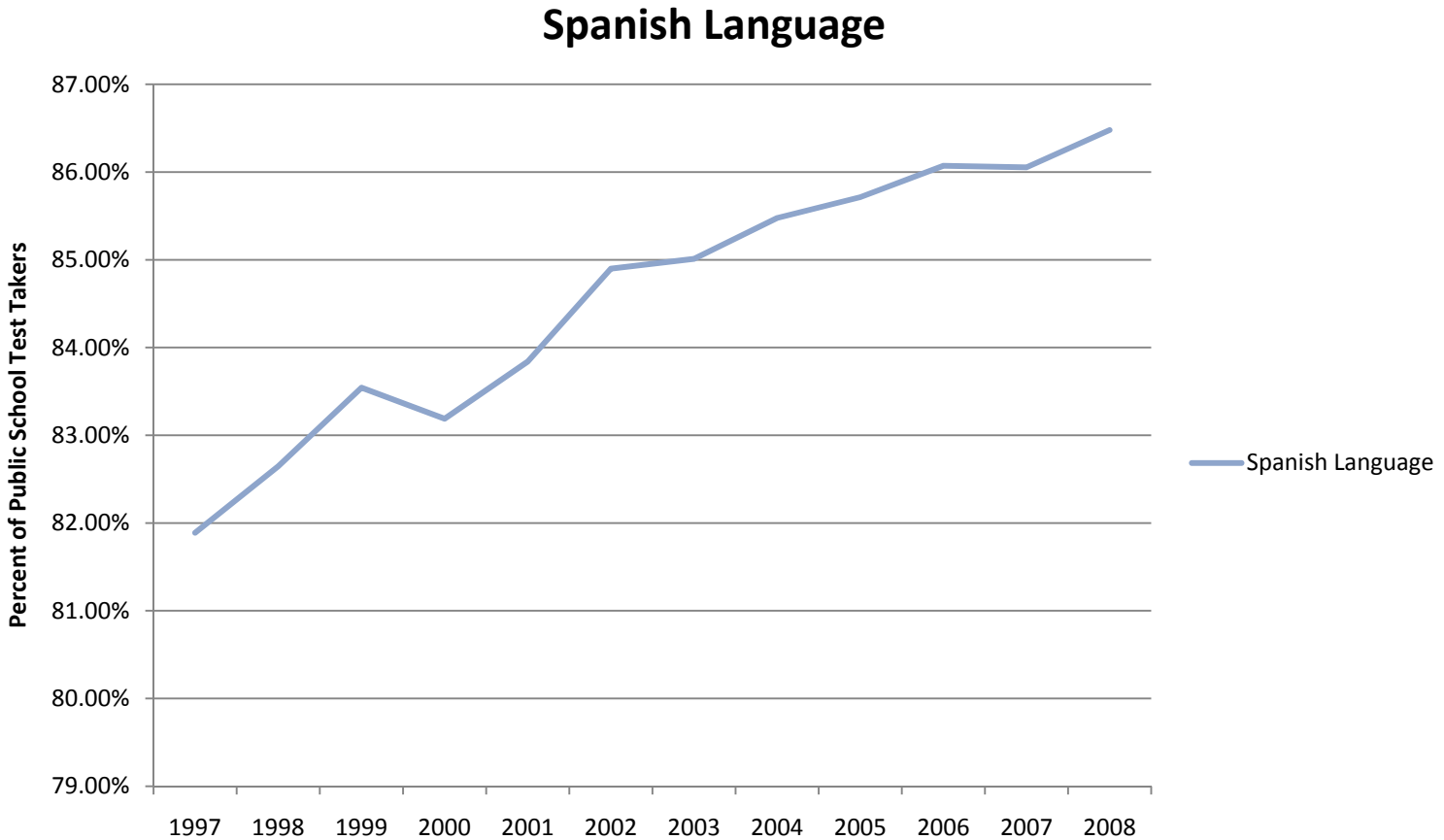
# Demographics – School Type



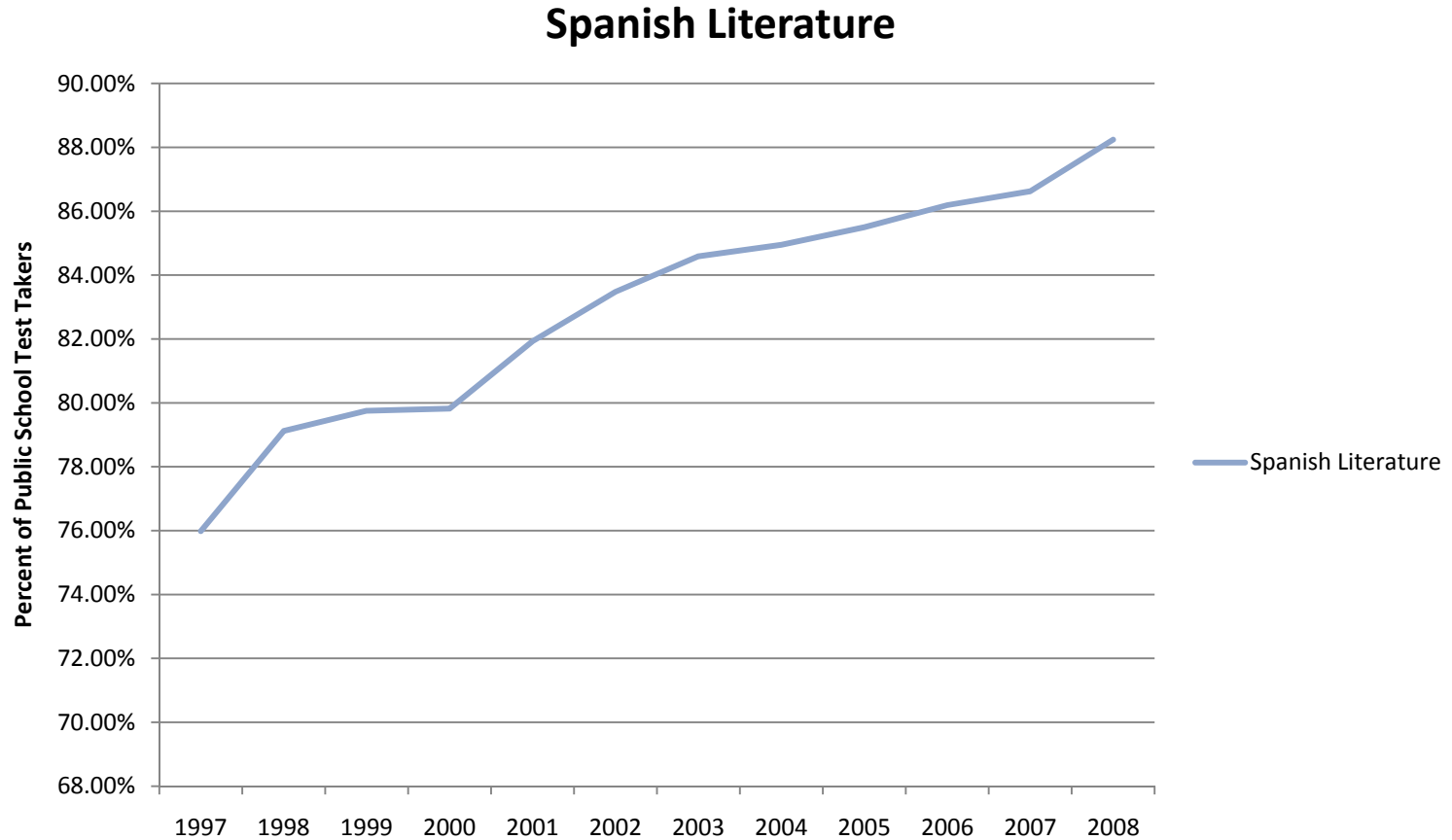
# Demographics – School Type



# Demographics – School Type

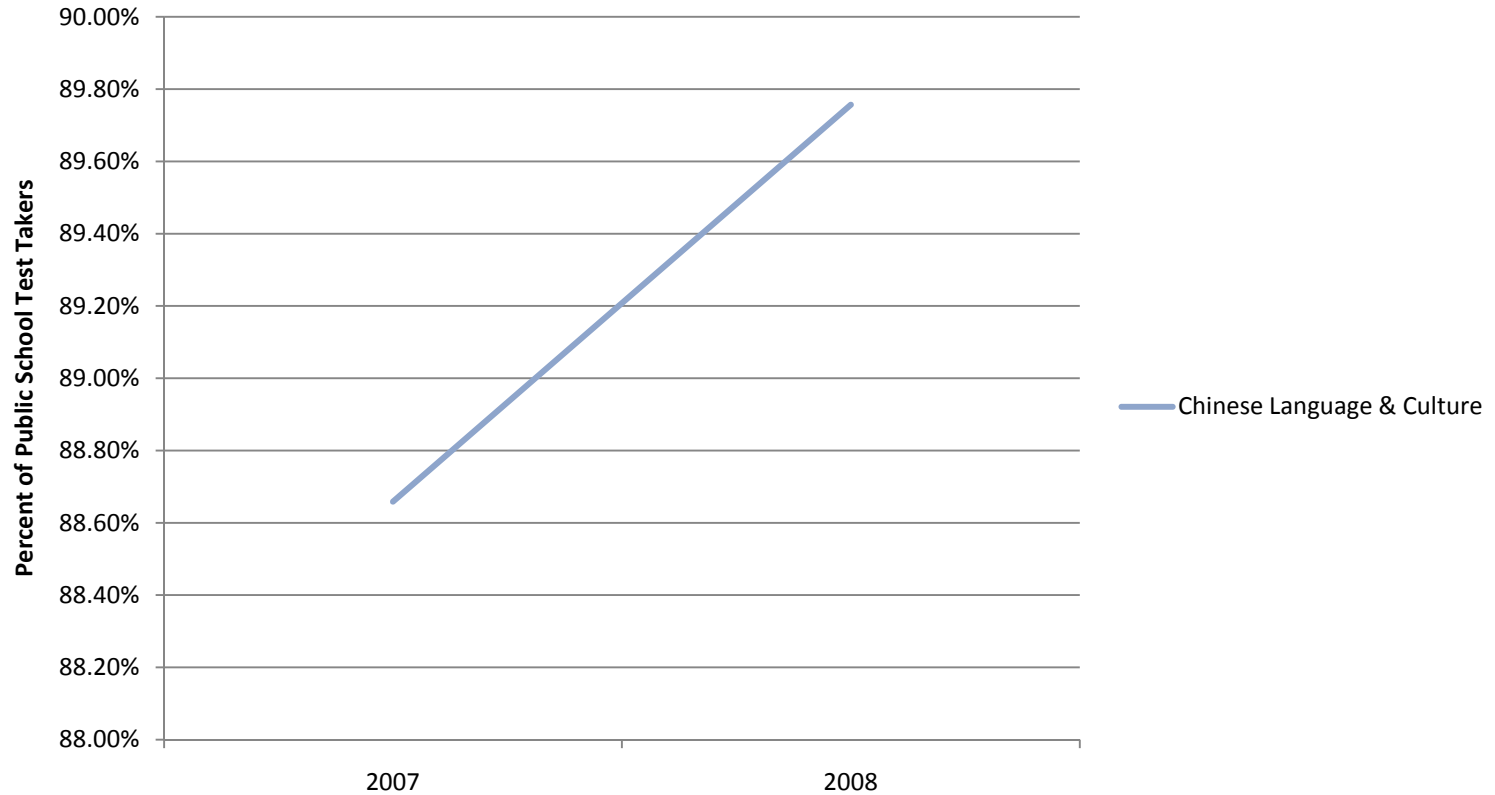


# Demographics – School Type



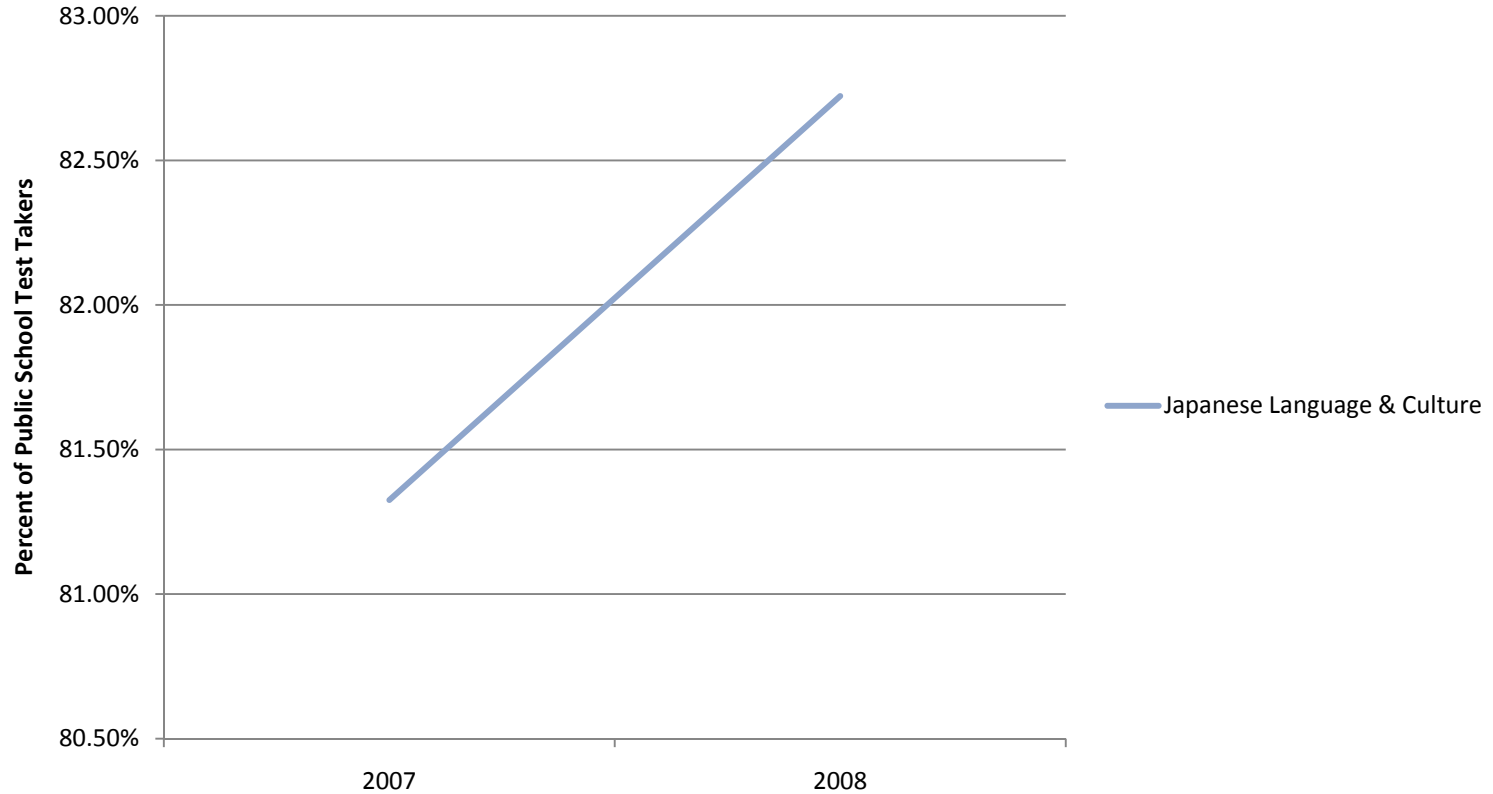
# Demographics – School Type

## Chinese Language & Culture



# Demographics – School Type

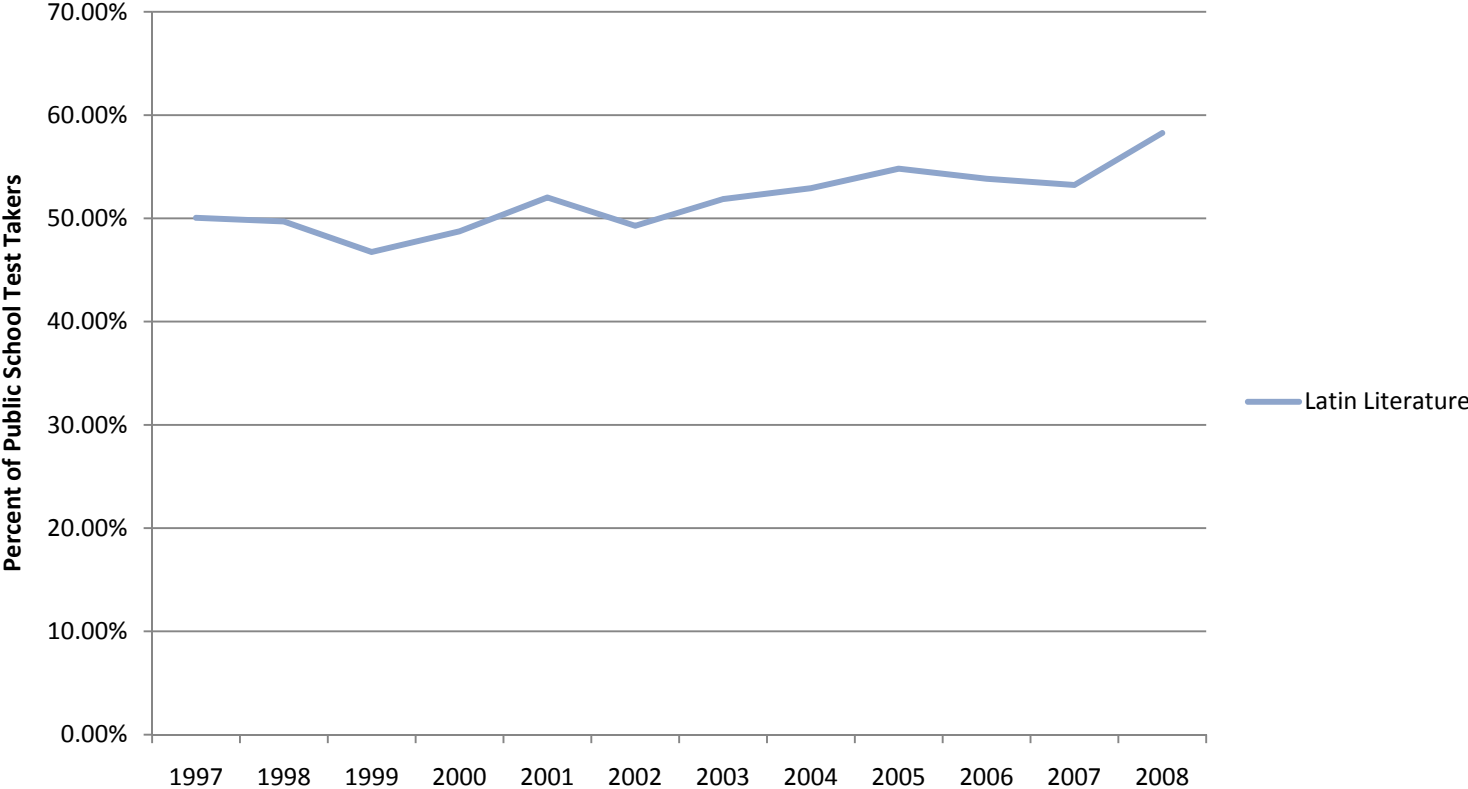
## Japanese Language & Culture



# Demographics – School Type



### Latin Literature



- While AP Foreign Language test taking has been growing since 1997, recent years have seen declines in all languages
- The majority of test takers in most languages are:
  - White
  - Female
  - In 12<sup>th</sup> Grade
  - In Public Schools

## **ABOUT SWA CONSULTING INC.**

SWA Consulting Inc. (formerly Surface, Ward, and Associates) provides analytics and evidence-based solutions for clients using the principles and methods of industrial/organizational (I/O) psychology. Since 1997, SWA has advised and assisted corporate, non-profit and governmental clients on:

- Training and development
- Performance measurement and management
- Organizational effectiveness
- Test development and validation
- Program/training evaluation
- Work/job analysis
- Needs assessment
- Selection system design
- Study and analysis related to human capital issues
- Metric development and data collection
- Advanced data analysis

One specific practice area is analytics, research, and consulting on foreign language and culture in work contexts. In this area, SWA has conducted numerous projects, including language assessment validation and psychometric research; evaluations of language training, training tools, and job aids; language and culture focused needs assessments and job analysis; and advanced analysis of language research data.

Based in Raleigh, NC, and led by Drs. Eric A. Surface and Stephen J. Ward, SWA now employs close to twenty I/O professionals at the masters and PhD levels. SWA professionals are committed to providing clients the best data and analysis with which to make solid data-driven decisions. Taking a scientist-practitioner perspective, SWA professionals conduct model-based, evidence-driven research and consulting to provide the best answers and solutions to enhance our clients' mission and business objectives. SWA has competencies in measurement, data collection, analytics, data modeling, systematic reviews, validation, and evaluation.

For more information about SWA, our projects, and our capabilities, please visit our website ([www.swa-consulting.com](http://www.swa-consulting.com)) or contact Dr. Eric A. Surface ([esurface@swa-consulting.com](mailto:esurface@swa-consulting.com)) or Dr. Stephen J. Ward ([sward@swa-consulting.com](mailto:sward@swa-consulting.com)).